



Bellbird Walking Track

(Darug & Tharawal Country)

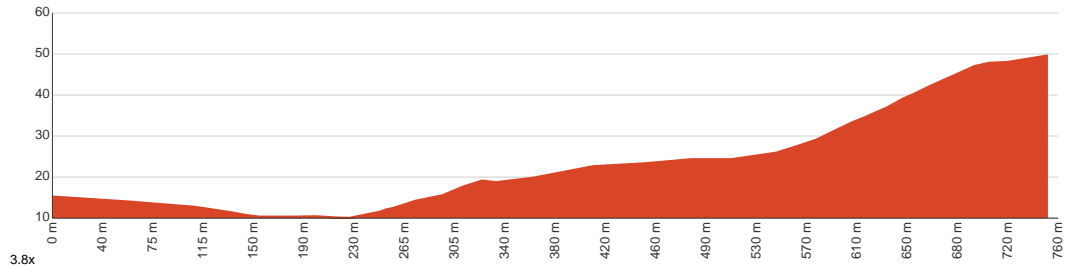
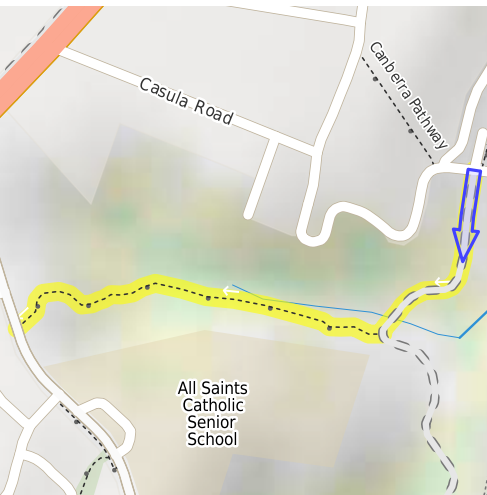
15 min to 45 min

750 m
One way

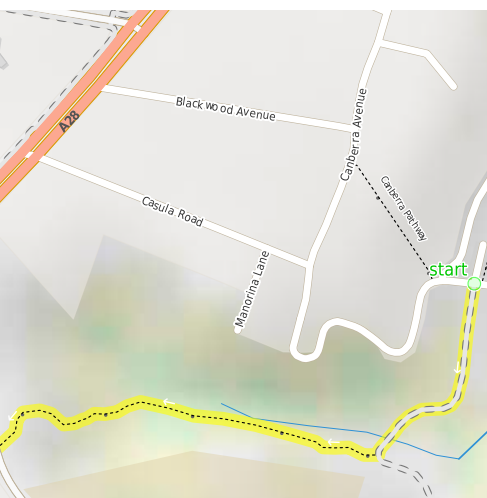
↑ 40 m
↓ 6 m

4
Hard track

Starting from Casula Station this one-way walk will take you through the dense forest of Leacock Regional Park. Stop at Leacock picnic area for lunch before finishing the track, or make it a return walk and retrace your steps back to the station. Let us begin by acknowledging the Darug & Tharawal people, Traditional Custodians of the land on which we travel today, and pay our respects to their Elders past and present.



Class 4 of 6 Rough track, where fallen trees and other obstacles are likely	
Quality of track	Formed track, with some branches and other obstacles (3/6)
Gradient	Gentle hills with occasional steps (2/6)
Signage	Minimal directional signs (4/6)
Infrastructure	Limited facilities (such as cliffs not fenced, significant creeks not bridged) (4/6)
Experience Required	No experience required (2/6)
Weather	Forecasted & unexpected storms and severe weather may impact on navigation and safety (4/6)



Getting to the start: From Hume Highway, A28

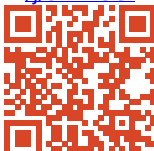
- Turn on to Casula Road then drive for 360 m
- Turn right onto Casula Road and drive for another 410 m

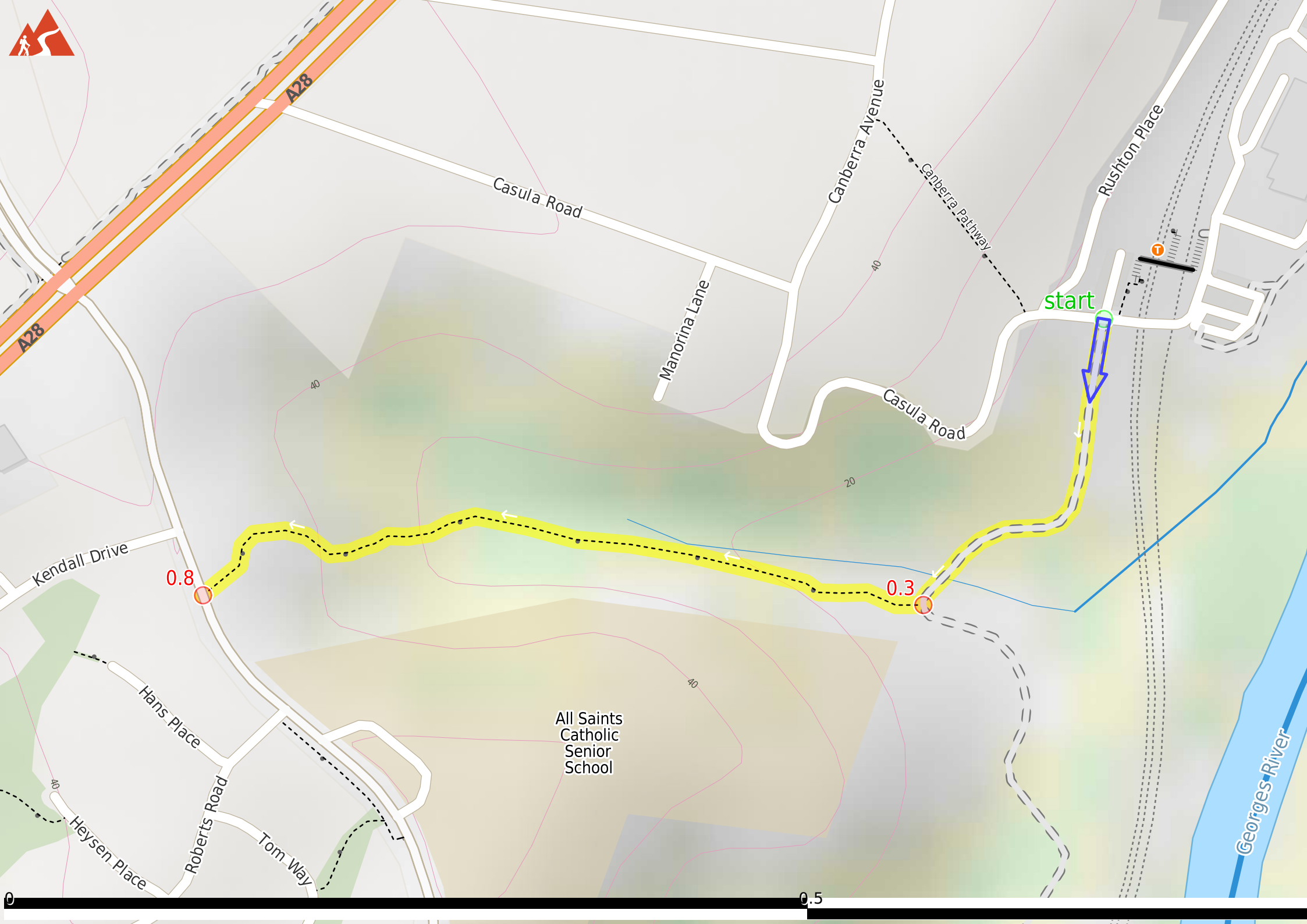
Before you start any journey ensure you;

- Tell someone you trust where you are going and what to do if you are late returning
- Have adequate equipment, supplies, skills & knowledge to undertake this journey safely
- Consider weather forecasts, park/track closures & fire dangers
- Can respond to emergencies & call for help at any point
- Are healthy and fit enough for this journey

If not, change plans and stay safe. It is okay to delay and ask people for help.

Share
Bushwalk.com
[/j/9HWGU](https://bushwalk.com/j/9HWGU)





0.8

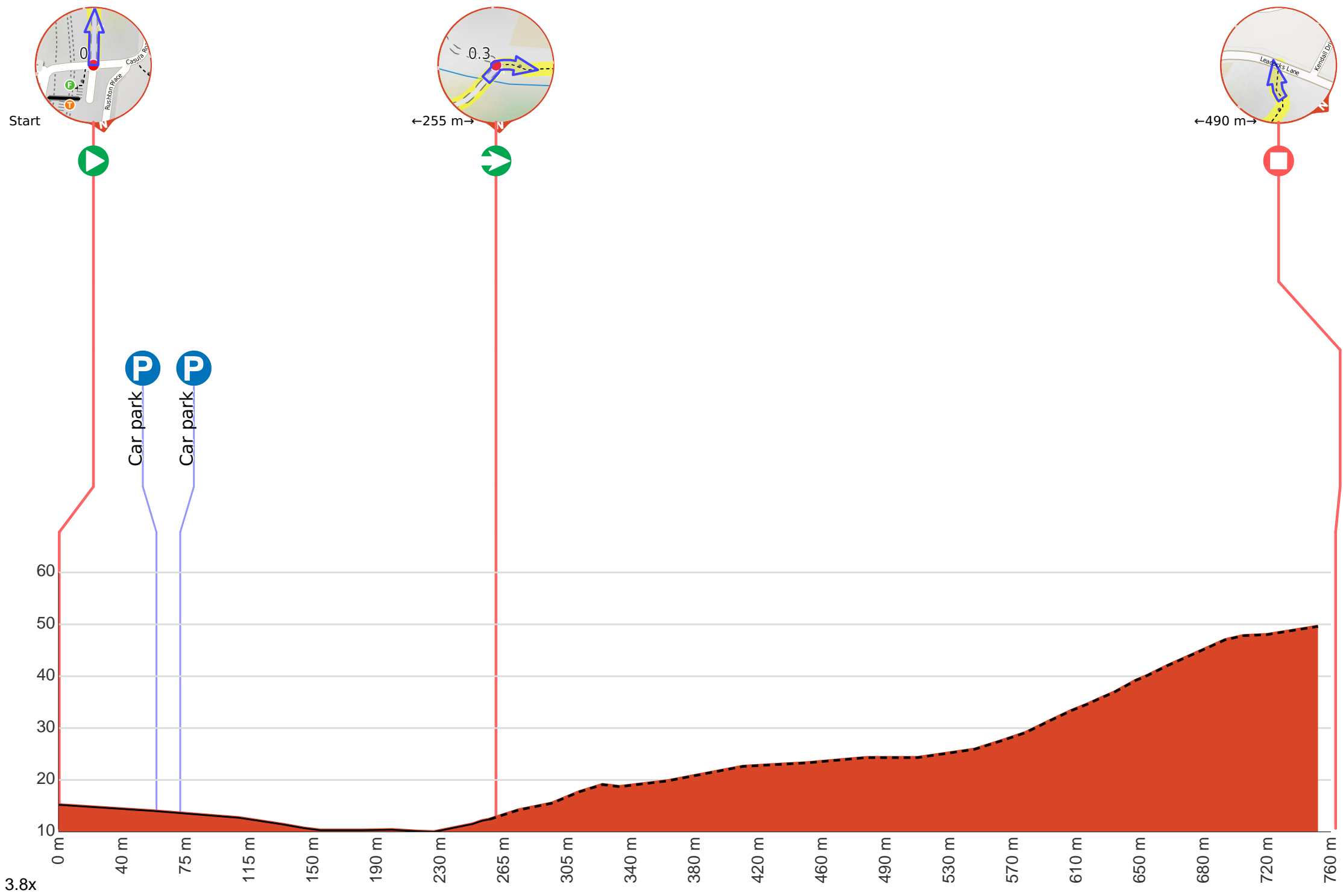
0.3

start

All Saints
Catholic
Senior
School

0.5

©





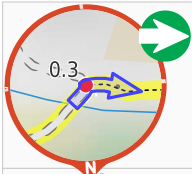
Start.



After 55 m pass the car park (15 m on your left).



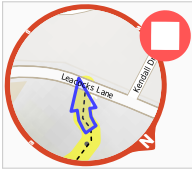
After another 15 m pass the car park (65 m on your left).



After another 185 m **turn right**.



After another 490 m come to a park.



The end.