



Totness Recreation Park Northern and Southern Loop



45 min to 1 h 15 min



20 min to 40 min



4.2 km
Circuit

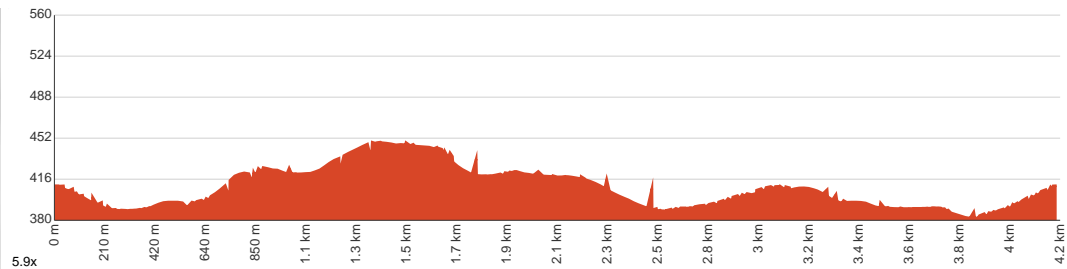


↑ 121 m
↓ 121 m



Moderate track

Starting from the Gate 1 car park at the end of Milne Road, Totness, this walk takes you on a circuit around the northern and southern sections of Totness Recreation Park. Popular for bushwalking and birdwatching, Totness Recreation Park protects remnant unique vegetation, including stringybark, blue gum and manna gum woodlands, and contains a former railway dam in the northern section, built in 1884 to supply water for steam engines travelling to Victor Harbour. This fairly easy loop initially follows the central fire track to the historic dam, with a boardwalk section across the boggy areas at the edge of the dam. Near the freeway, a creek flows into the dam through a 1.4m tall stormwater pipe, which walkers can head through and explore the larger, more rugged southern section of the park, where there are often fewer people and more wildlife. Continuing along the fire track around the dam, the walk offers glimpses of rural farms and livestock. This loop consists of gently sloping fire tracks and narrow walking trails, suitable for most fitness levels. There are no toilets, facilities, or interpretive signs in the park. Dogs are allowed, but must be kept on a leash. Let us begin by acknowledging the Traditional Custodians of the land on which we travel today, and pay our respects to their Elders past and present.



Class 3 of 6

Formed track, with some branches and other obstacles

| | |
|---------------------|--|
| Quality of track | Formed track, with some branches and other obstacles (3/6) |
| Gradient | Gentle hills with occasional steps (2/6) |
| Signage | Directional signs along the way (3/6) |
| Infrastructure | Limited facilities, not all cliffs are fenced (3/6) |
| Experience Required | Some bushwalking experience recommended (3/6) |
| Weather | Weather generally has little impact on safety (2/6) |

Getting to the start: From South Eastern Freeway, M1, Mount Barker District Council.

- Turn on to then drive for 650 m
- Keep left and drive for another 275 m
- At roundabout, take exit 1 onto Mount Barker Road and drive for another 930 m
- Turn left onto Milne Road and drive for another 420 m

Before you start any journey ensure you;

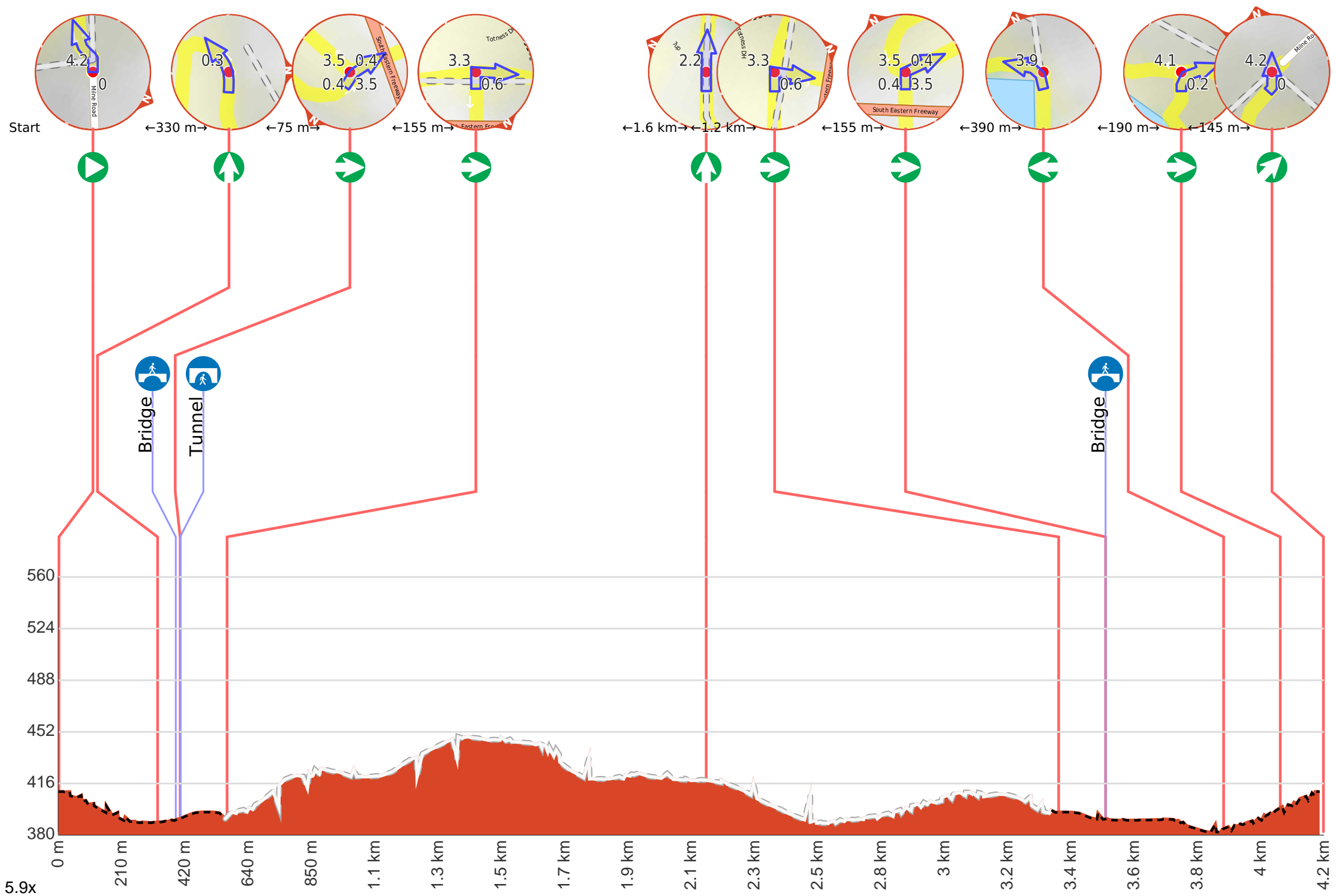
- Tell someone you trust where you are going and what to do if you are late returning
- Have adequate equipment, supplies, skills & knowledge to undertake this journey safely
- Consider weather forecasts, park/track closures & fire dangers
- Can respond to emergencies & call for help at any point
- Are healthy and fit enough for this journey

If not, change plans and stay safe. It is okay to delay and ask people for help.

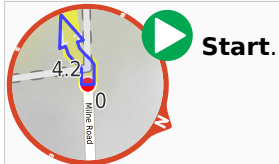
Share
Bushwalk.com
[j/CW1BQ1](https://bushwalk.com/j/CW1BQ1)







Getting started: From the Gate 1 car park at the end of Milne Road, Totness, head through the gate and follow the fire track ahead, passing a 'Totness Recreation Park' sign (to your right). Once you reach the dam, keep right and head along the fire track ahead to continue the Totness Recreation Park Northern and Southern Loop (counterclockwise).

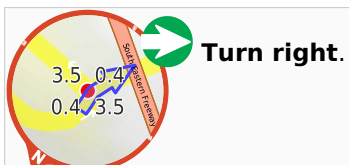


After another 15 m **veer left**.

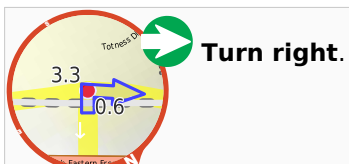
After another 145 m **continue straight**.



After another 60 m cross the bridge (about 15 m long)



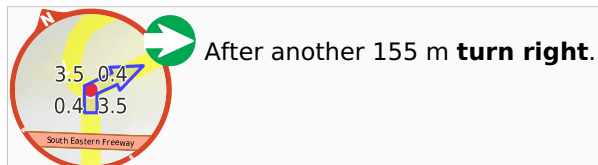
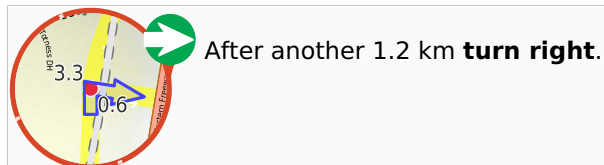
Then head through the tunnel (about 155 m long)



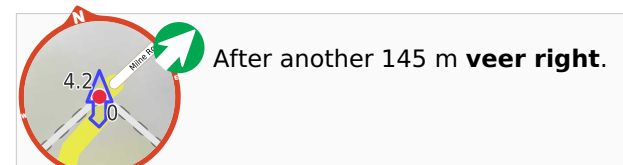
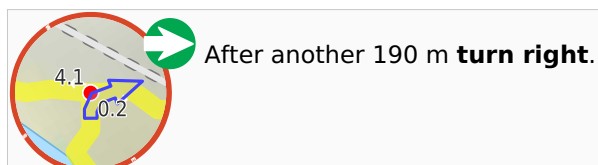
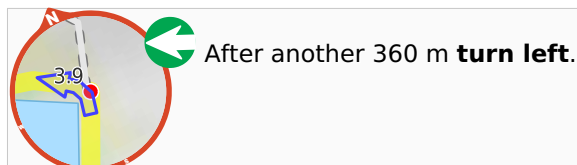
After another 820 m **continue straight**.

After another 470 m **continue straight**.

After another 195 m **continue straight**.



Then cross the bridge (about 30 m long)



After another 15 m come to the end.