






Morialta Falls Valley Walk

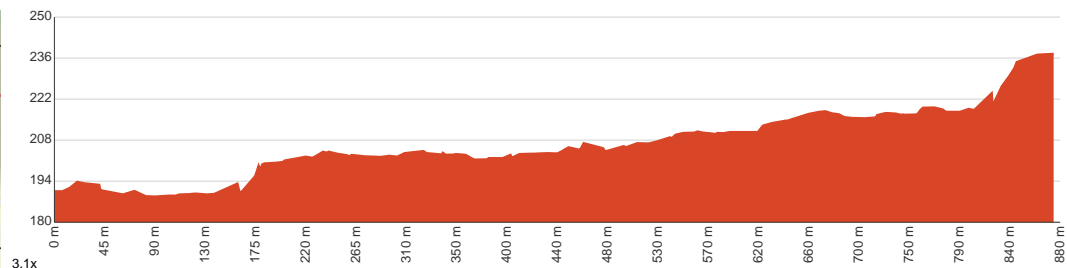
 20 min to 30 min
 10 min to 15 min
 15 min to 45 min


1.7 km
Return


↑ 85 m
↓ 85 m


Smooth & flat

Starting from the car park at the end of Morialta Falls Road, Woodforde, this walk takes you to First Falls and back via the Morialta Falls Valley Walk. This short and easy walk follows Fourth Creek through Morialta Gorge to First Falls, the tallest of the three waterfalls in Morialta Conservation Park. The track follows the creek along the valley floor through the narrowing gorge, with sturdy bridges at each creek crossing point, passing an optional side trip to Giant's Cave along the way. The track ends with a short boardwalk section leading to a lookout at the base of First Falls, which cascades around 40m over picturesque red vertical cliffs. This walk consists of flat, well-maintained gravel tracks and is suitable for prams, wheelchairs and all fitness levels. Dogs on a leash are permitted only in the park's recreation zone. Let us begin by acknowledging the Traditional Custodians of the land on which we travel today, and pay our respects to their Elders past and present.

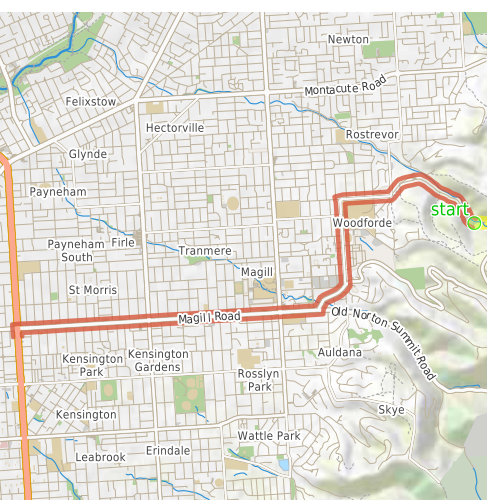


Class 1 of 6
Smooth and hardened path

Quality of track	Smooth and hardened path (1/6)
Gradient	Flat, no steps (1/6)
Signage	Clearly signposted (1/6)
Infrastructure	Generally useful facilities (such as fenced cliffs and seats) (1/6)
Experience Required	No experience required (1/6)
Weather	Weather generally has little impact on safety (1/6)

Getting to the start: From Portrush Road, A17, Norwood.

- Turn on to Magill Road, B27 then drive for 3.7 km
- Turn left onto Norton Summit Road and drive for another 480 m
- Turn left onto Glen Stuart Road and drive for another 1 km
- At roundabout, take exit 2 onto Morialta Road and drive for another 660 m
- Turn right onto Morialta Falls Road and drive for another 1.3 km
- Keep left onto First Falls Valley Walk and drive for another 6 m



Before you start any journey ensure you;

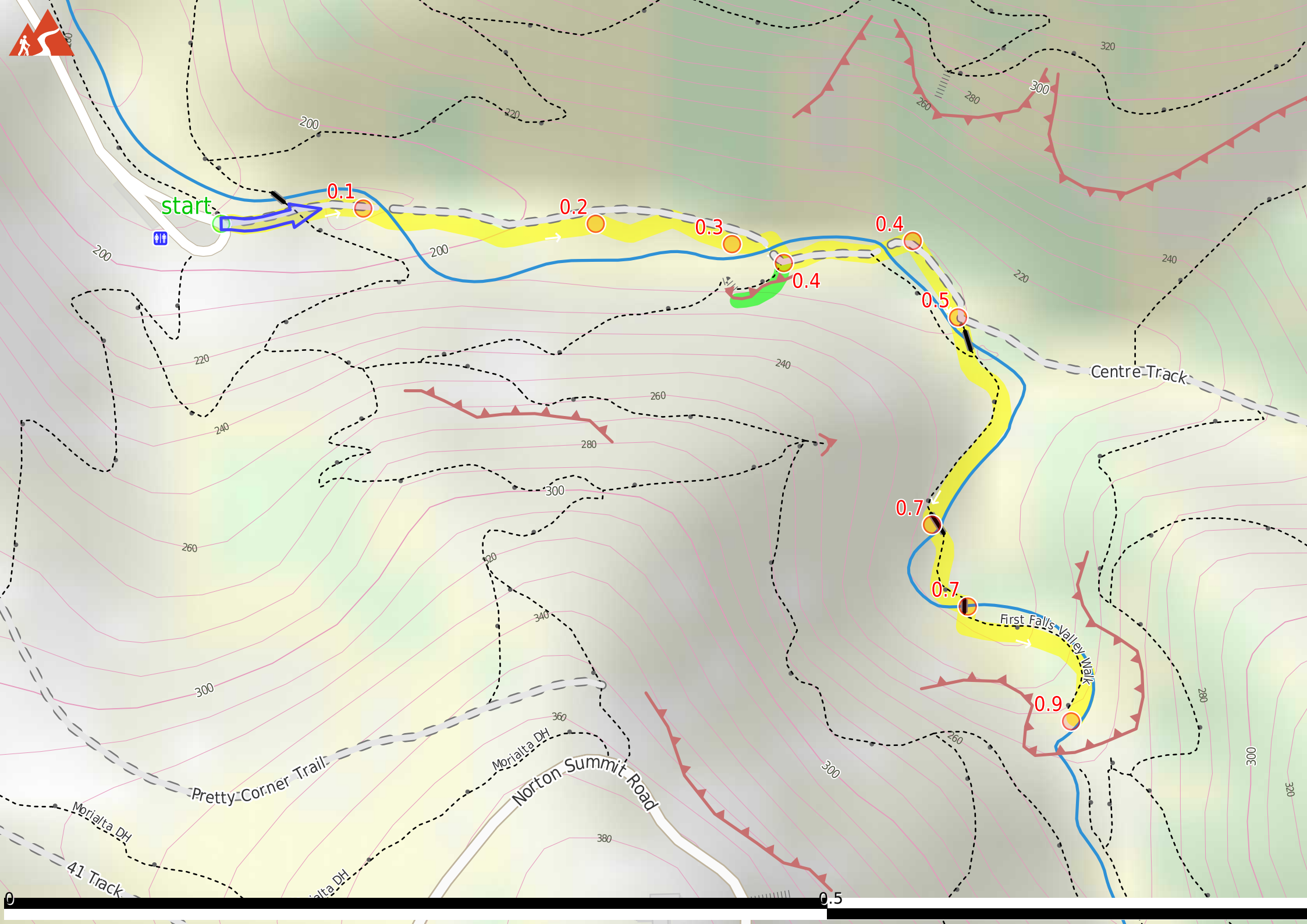
- Tell someone you trust where you are going and what to do if you are late returning
- Have adequate equipment, supplies, skills & knowledge to undertake this journey safely
- Consider weather forecasts, park/track closures & fire dangers
- Can respond to emergencies & call for help at any point
- Are healthy and fit enough for this journey

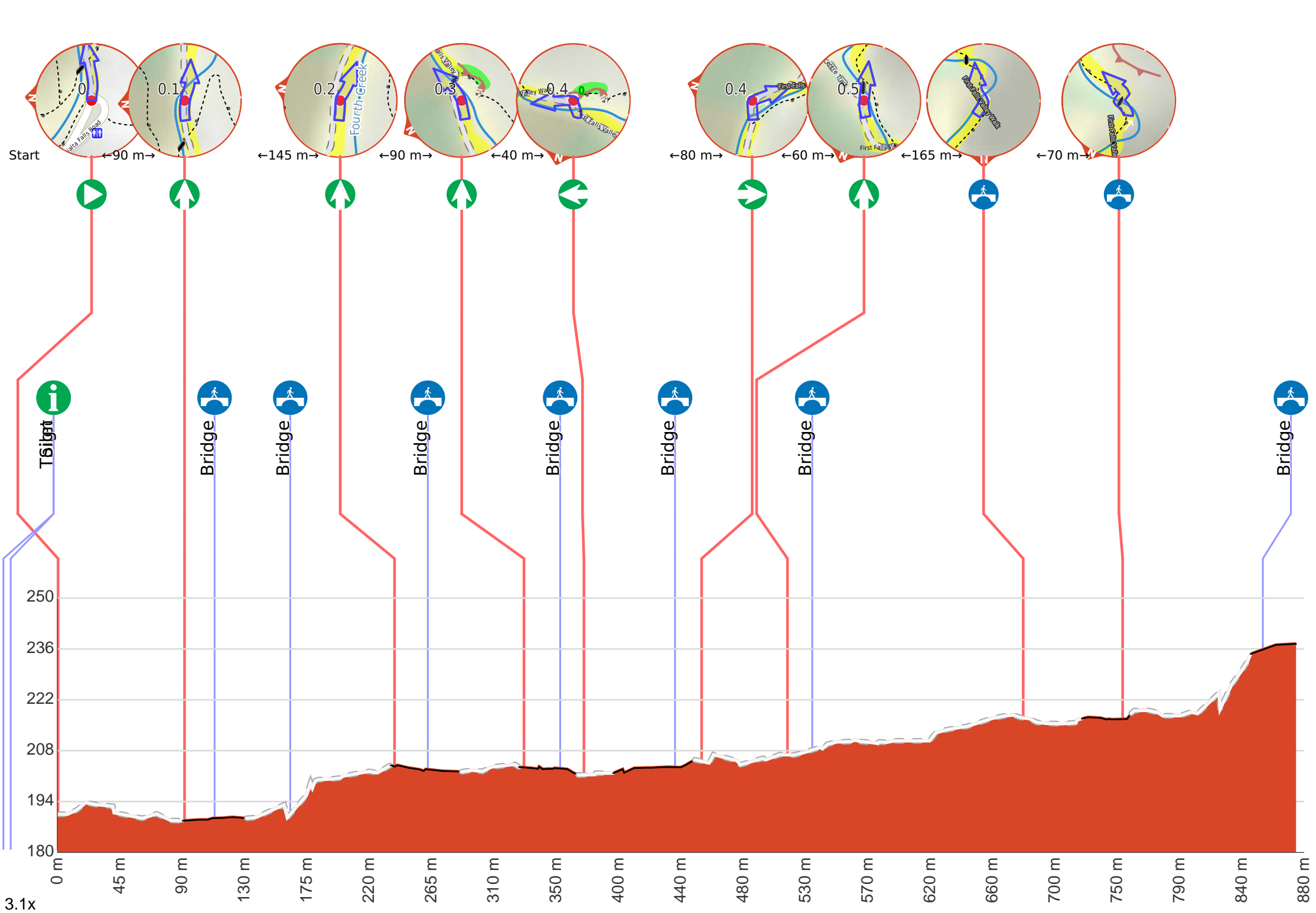
If not, change plans and stay safe. It is okay to delay and ask people for help.

Share

[Bushwalk.com](https://bushwalk.com/ij/GETD9Q)
[/ij/GETD9Q](https://bushwalk.com/ij/GETD9Q)







Getting started: From the car park at the end of Morialta Falls Road, Woodforde, head past the large information shelter (to your right) beyond the car park. Continue ahead past a smaller information shelter and a bridge (to your left), passing between two 'Morialta First Falls' signs. Head straight along the wide track, following the 'Morialta Falls Valley Walk' signs, and continue the Morialta Falls Valley Walk.

At the intersection of First Falls Valley Walk & Morialta Falls Road **Start** heading along *First Falls Valley Walk* (a vehicle track).

There is a toilet (about 40 m back from the start). This toilet is wheelchair accessible.

There is a sign (about 35 m back from the start).

After another 70 m **continue straight**, to head along First Falls Valley Walk.

After another 50 m **continue straight**.

After another 20 m cross the bridge (about 8 m long)

After another 15 m **continue straight**, to head along First Falls Valley Walk.

After another 30 m cross the bridge (about 15 m long)

After another 6 m **continue straight**, to head along First Falls Valley Walk.

After another 55 m **continue straight**.

After another 25 m cross the bridge (about 15 m long)

After another 15 m **veer right**, to head along First Falls Valley Walk.

After another 40 m **continue straight**.

After another 25 m cross the bridge (about 7 m long)

Start of an optional side trip: This optional side trip takes you to the Giant's Cave.

To start this optional side trip continue straight here. **Start**.

Then head up the surface/paved steps (about 40 m long)

"Giant's Cave".

The end.

Turn around and retrace your steps back the 45 m to the main route.

Back at the main route turn right and follow on from the 370 m waypoint.

After another 10 m **turn left**, to head along First Falls Valley Walk.

After another 25 m **continue straight**. Keep right.

After another 30 m **continue straight**.

After another 8 m cross the bridge (about 10 m long)

After another 7 m **turn right**, to head along First Falls Valley Walk.

After another 60 m (at the intersection of First Falls Valley Walk & Centre Track) **continue straight**, to head along First Falls Valley Walk.

After another 15 m cross the bridge (about 10 m long)

After another 5 m **continue straight**, to head along First Falls Valley Walk.

After another 130 m cross the bridge (about 10 m long)

After another 35 m **veer left**.

After another 20 m cross the bridge (about 10 m long)

After another 3 m **turn left**, to head along First Falls Valley Walk.



After another 85 m cross the bridge (about 30 m long)



"First Falls".



Turn around here and retrace the main route for 870 m to get back to the start.