



# Turners Walking Track

(Awabakal Country)

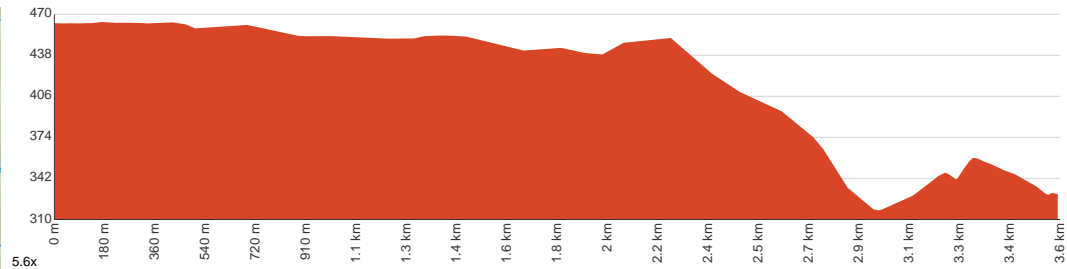
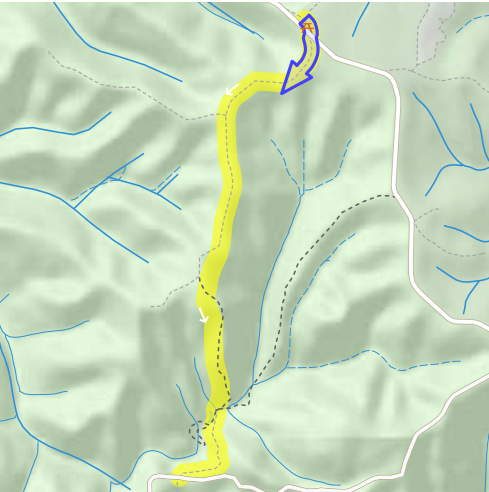
 2 h 15 min to 3 h 30 min

  
7.2 km  
Return

  
↑ 274 m  
↓ 274 m

  
Hard track

Take this challenging return walk in Watagans National Park to see the historic remnants of O'Hara's Sawmill and take in the beautiful rainforest. Let us begin by acknowledging the Awabakal people, Traditional Custodians of the land on which we travel today, and pay our respects to their Elders past and present.



Class 4 of 6

Rough track, where fallen trees and other obstacles are likely

Quality of track	Rough track, where fallen trees and other obstacles are likely (4/6)
Gradient	Short steep hills (3/6)
Signage	Minimal directional signs (4/6)
Infrastructure	Limited facilities (such as cliffs not fenced, significant creeks not bridged) (4/6)
Experience Required	Moderate level of bushwalking experience recommended (4/6)
Weather	Foretasted & unexpected storms and severe weather may impact on navigation and safety (4/6)

**Getting to the start:** From Leggetts Drive, B82

- Turn on to Leggetts Drive then drive for 185 m
- Turn sharp left onto Sandy Creek Road and drive for another 9.6 km
- Turn left onto Heaton Road and drive for another 6.6 km
- Keep left onto Bakers Road and drive for another 175 m
- Turn slight right and drive for another 2 m

## Before you start any journey ensure you;

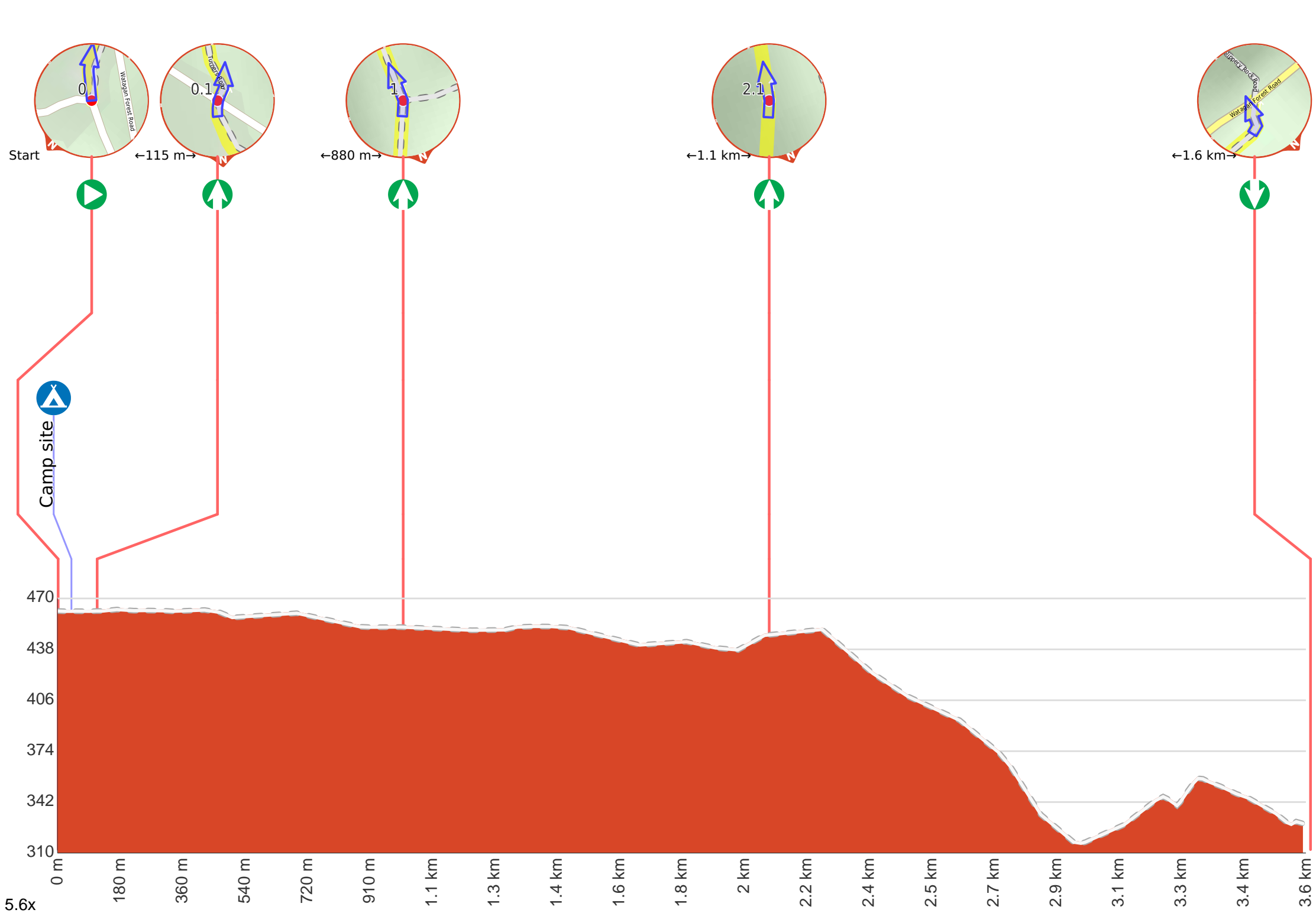
- Tell someone you trust where you are going and what to do if you are late returning
- Have adequate equipment, supplies, skills & knowledge to undertake this journey safely
- Consider weather forecasts, park/track closures & fire dangers
- Can respond to emergencies & call for help at any point
- Are healthy and fit enough for this journey

If not, change plans and stay safe. It is okay to delay and ask people for help.

Share  
Bushwalk.com  
[/i/JF9PZH](https://bushwalk.com/track/turners-walking-track)





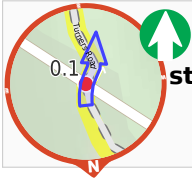




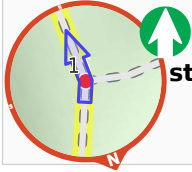
**Start.**



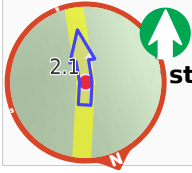
After 40 m come to the "Watagan Forest HQ camp site".  
This is a free campsite.



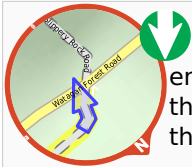
After another 75 m **continue straight.**



After another 880 m **continue straight.**



After another 1.1 km **continue straight.**



Continue another 1.6 km to find the end. Then turn around here and retrace the main route for 3.6 km to get back to the start.