



# West Cape Headland

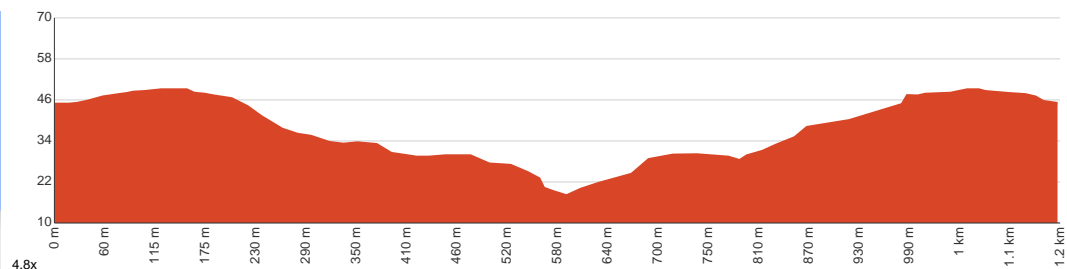
 15 min to 30 min

  
1.2 km  
Circuit

  
↑ 38 m  
↓ 38 m

  
Moderate track

Starting from the West Cape Day Visitor Area at the end of West Cape Road, Dhilba Guuranda-Innes National Park, this walk takes you on a circuit around the headland of West Cape via the West Cape Headland Hike. Dhilba Guuranda-Innes National Park is a remote coastal wilderness on the tip of the Yorke Peninsula, with a backdrop of rugged cliffs and sandy beaches, offering excellent opportunities for camping, bushwalking, birdwatching, fishing, surfing and discovering maritime history. This short hike winds through delicate coastal vegetation around the headland of West Cape, taking in spectacular views over Pondalowie Bay, the Southern Spencer Gulf Marine Park and its picturesque islands. The trail passes a 360° scenic lookout before passing the West Cape Lighthouse, a unique stainless steel lighthouse built in 1980, standing about 70 metres above sea level. The West Cape Day Visitor Area has picnic shelters, tables, toilets and a boardwalk to the beach. The walk begins near the Pondalowie Bay Campground, which is suitable for tents, caravans, camper vans and camper trailers and has toilets. This loop consists of narrow walking trails, with uneven natural surfaces and steps, suitable for average fitness levels. Let us begin by acknowledging the Traditional Custodians of the land on which we travel today, and pay our respects to their Elders past and present.

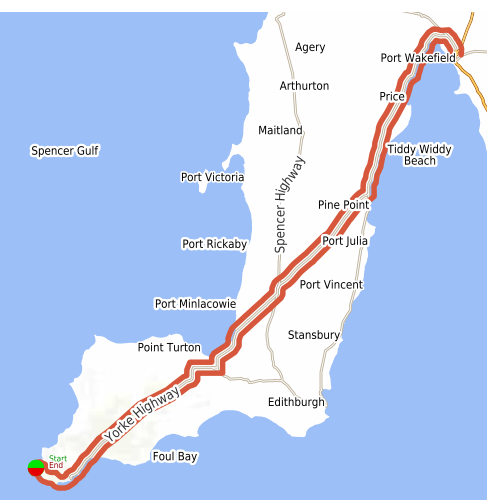


Class 3 of 6  
Formed track, with some branches and other obstacles

Quality of track	Formed track, with some branches and other obstacles (3/6)
Gradient	Gentle hills with occasional steps (2/6)
Signage	Clearly signposted (1/6)
Infrastructure	Generally useful facilities (such as fenced cliffs and seats) (2/6)
Experience Required	Some bushwalking experience recommended (3/6)
Weather	Storms may impact on navigation and safety (3/6)

**Getting to the start:** From Port Wakefield Highway, Port Wakefield.

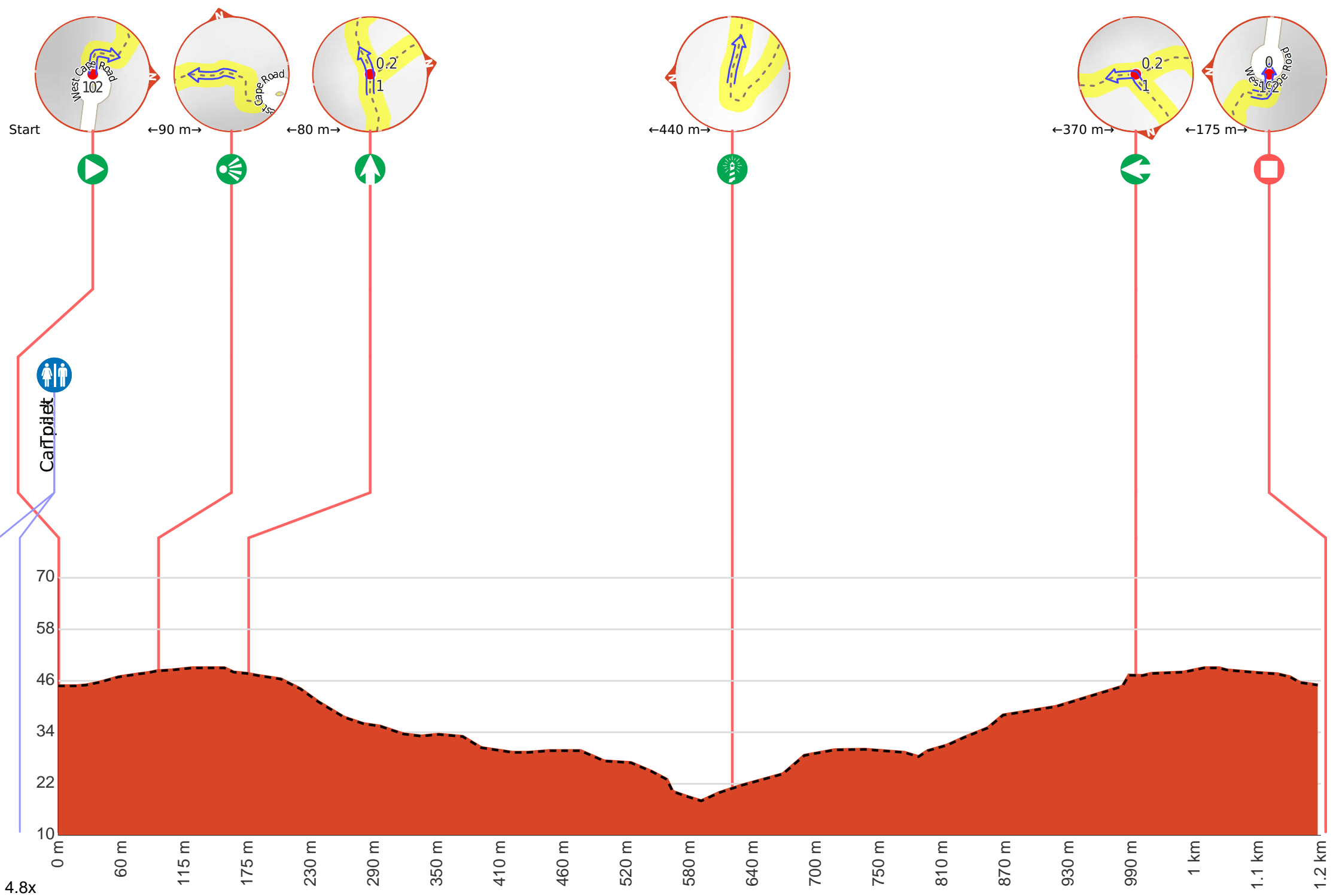
- Turn on to Copper Coast Highway then drive for 6.4 km
- At roundabout, take exit 1 onto Yorke Highway and drive for another 55.3 km
- Turn right onto Yorke Highway and drive for another 37.3 km
- Turn left onto Maitland Road and drive for another 32 km
- Turn right onto Moorowie Station Road and drive for another 6.8 km
- Turn left onto Yorke Highway and drive for another 48.7 km
- At roundabout, take exit 1 onto Stenhouse Bay Road and drive for another 175 m
- Keep right and drive for another 265 m
- Turn slight left onto Yorke Highway and drive for another 660 m
- Turn slight left onto Yorke Highway and drive for another 25 m
- Turn right onto Pondalowie Bay Road and drive for another 11.3 km
- Turn left onto West Cape Road and drive for another 1.4 km
- Turn left onto West Cape Road and drive for another 35 m



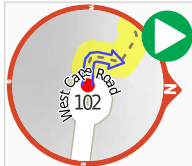
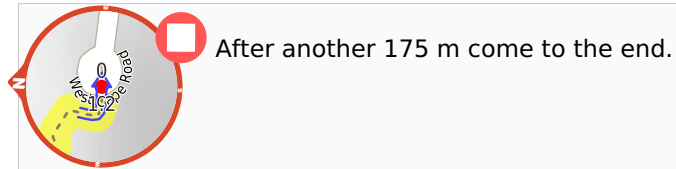
Share  
Bushwalk.com  
[j/IKOMWY](https://bushwalk.com/j/IKOMWY)







**Getting started:** From the West Cape Day Visitor Area at the end of West Cape Road, Dhlba Guuranda-Innes National Park, head up the steps, passing a '360° Scenic Lookout' and 'West Cape Lighthouse' directional sign (to your right). Follow the trail to the lookout, then continue for about 100m, until you reach a junction. From there, head along the trail to your left and continue the West Cape Headland Track (clockwise).



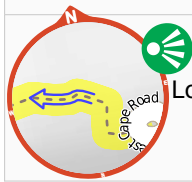
**Start.**



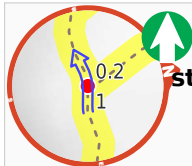
West Cape car park (about 55 m back from the start).



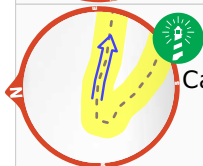
There is a toilet (about 35 m back from the start).



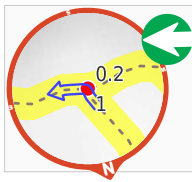
After 125 m come to the "West Cape Lookout" (on your left).



After another 80 m **continue straight.**



After another 440 m pass the "West Cape" (on your right).



After another 370 m **turn left.**