



Nerang Ridgeline Circuit



3 h 30 min to 5 h 30 min



2 h to 3 h



10.5 km
Circuit

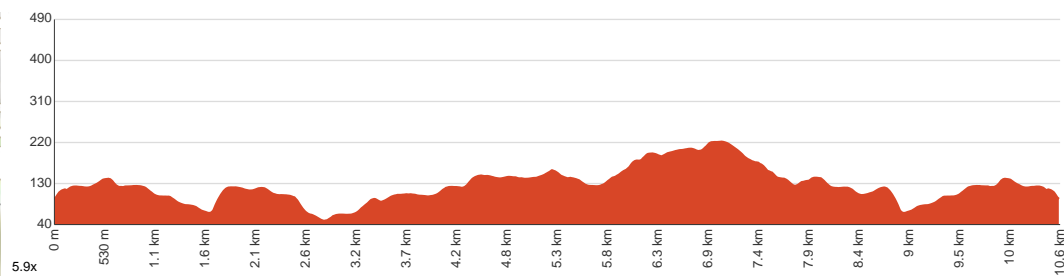
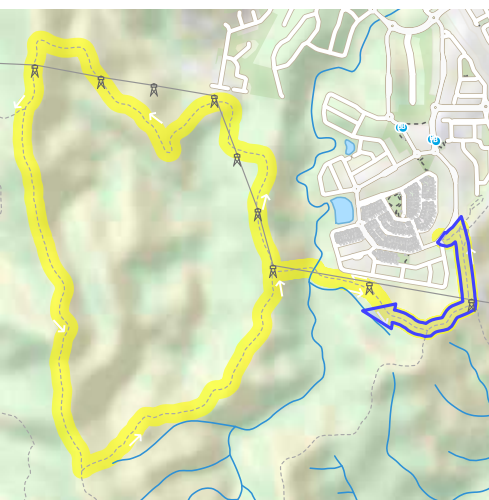


↑ 476 m
↓ 476 m



Hard track

Starting from Wunburra Circuit, Pacific Pines, this walk takes you on a circuit in the woodland of Nerang National Park, visiting the northwestern ridgeline along the way. Expect a scenic circular track that has great westerly views, going through some diverse vegetation throughout. It's surely challenging (even if you take it slow), but the scenery and the wildlife is worth it for many. In fact, you're almost guaranteed to run into some fellow eastern grey kangaroos whilst making your way through the rocky tracks. Mountain bikes are allowed on these tracks as well. Notice the change in vegetation as you listen to the lovely birdsong in the otherwise quiet park. Try to avoid this track in hot summer days and keep an eye out for snakes. Let us begin by acknowledging the Traditional Custodians of the land on which we travel today, and pay our respects to their Elders past and present.



Class 4 of 6

Rough track, where fallen trees and other obstacles are likely

Quality of track	Formed track, with some branches and other obstacles (3/6)
Gradient	Very steep (4/6)
Signage	Directional signs along the way (3/6)
Infrastructure	Generally useful facilities (such as fenced cliffs and seats) (2/6)
Experience Required	Some bushwalking experience recommended (3/6)
Weather	Weather generally has little impact on safety (2/6)

Getting to the start: From Pacific Motorway, M1

- Turn on to then drive for 1.7 km
- Keep left and drive for another 45 m
- Turn left onto Smith Street and drive for another 2.4 km
- At roundabout, take exit 1 onto Pitcairn Way and drive for another 480 m
- At roundabout, take exit 2 onto Pitcairn Way and drive for another 810 m
- At roundabout, take exit 1 onto Brockman Way and drive for another 200 m
- At roundabout, take exit 2 onto Brockman Way and drive for another 295 m
- At roundabout, take exit 2 onto Brockman Way and drive for another 290 m
- At roundabout, take exit 1 onto Harmsworth Road and drive for another 230 m
- At roundabout, take exit 1 onto Wunburra Circuit and drive for another 570 m

Before you start any journey ensure you;

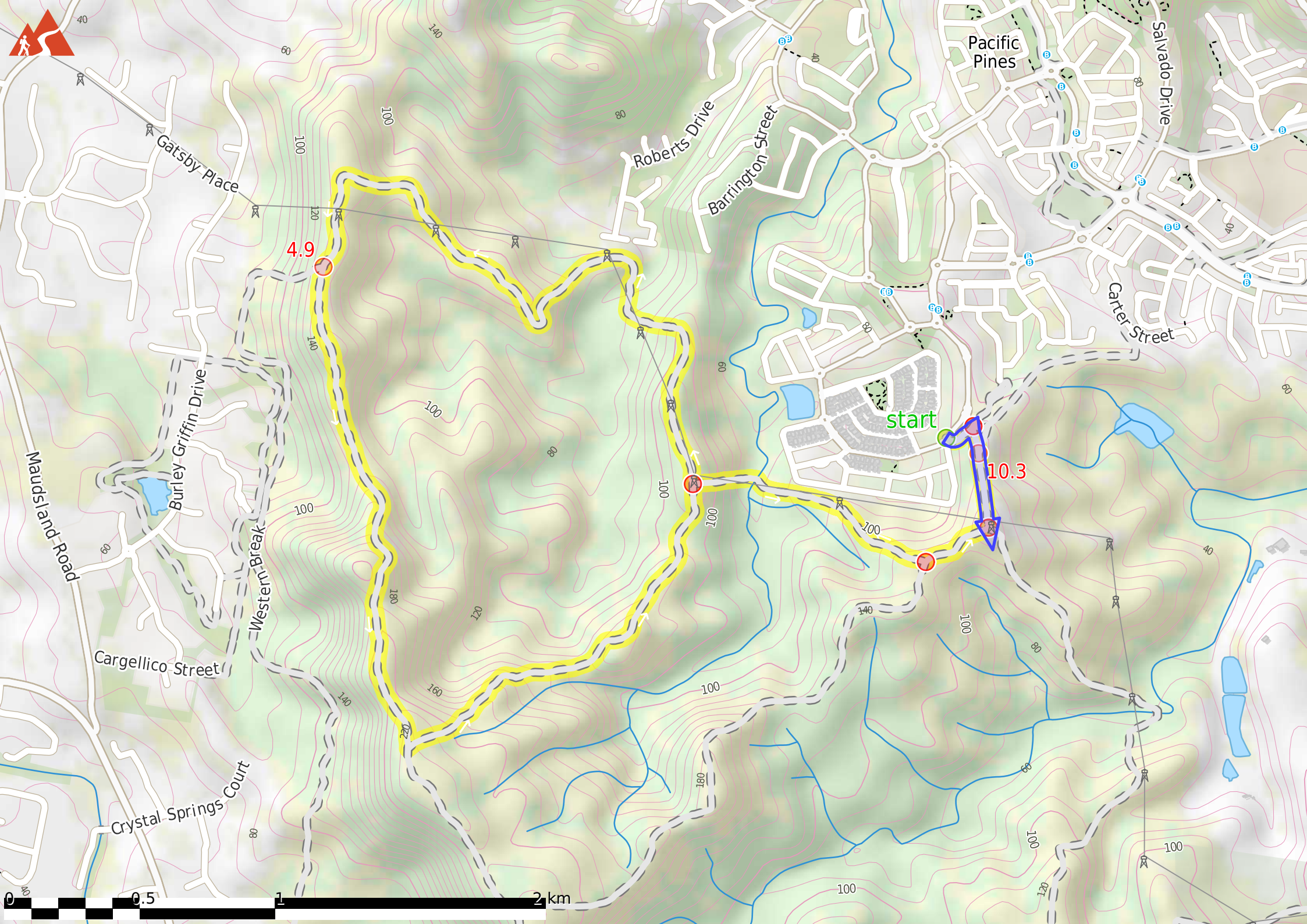
- Tell someone you trust where you are going and what to do if you are late returning
- Have adequate equipment, supplies, skills & knowledge to undertake this journey safely
- Consider weather forecasts, park/track closures & fire dangers
- Can respond to emergencies & call for help at any point
- Are healthy and fit enough for this journey

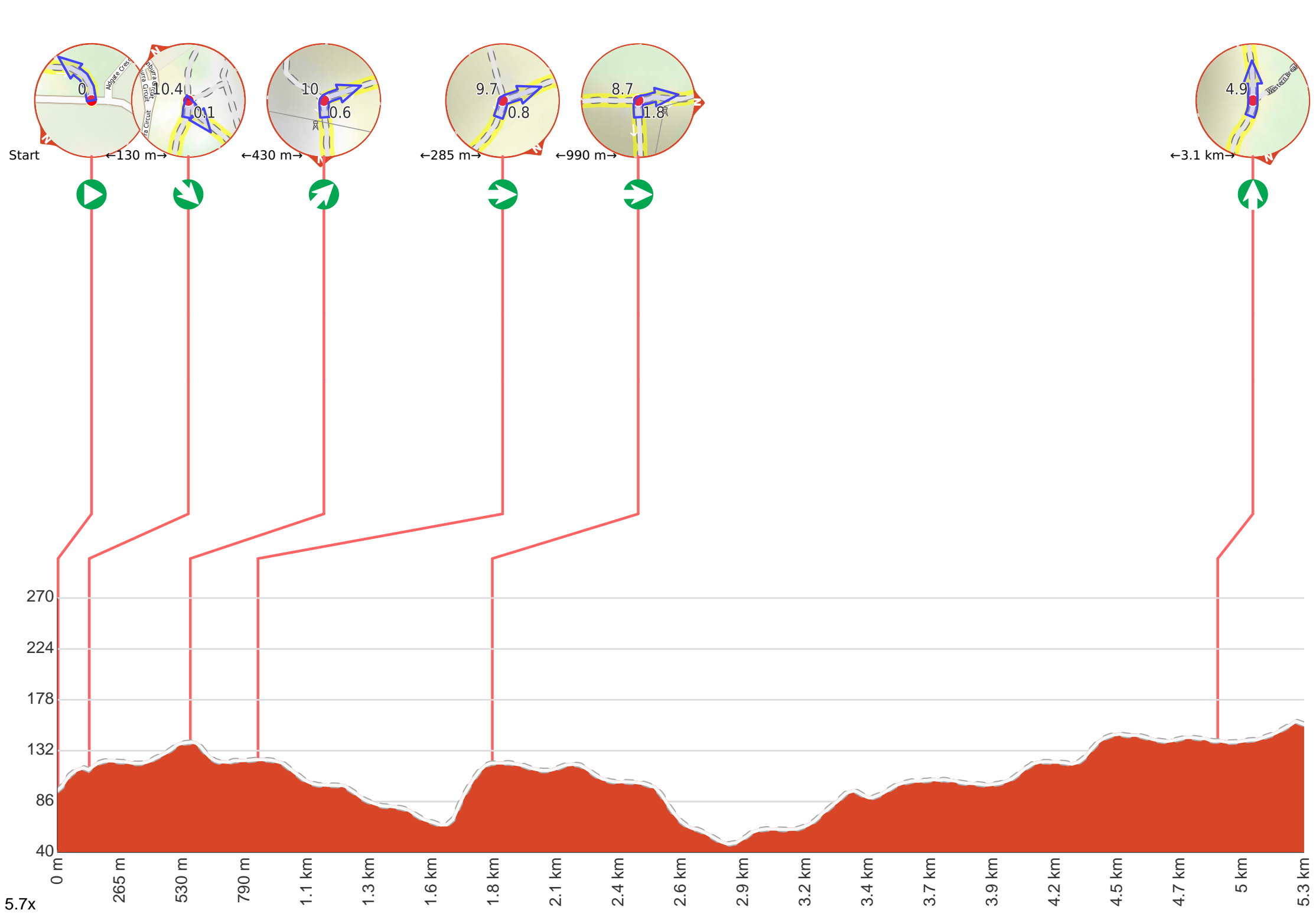
If not, change plans and stay safe. It is okay to delay and ask people for help.

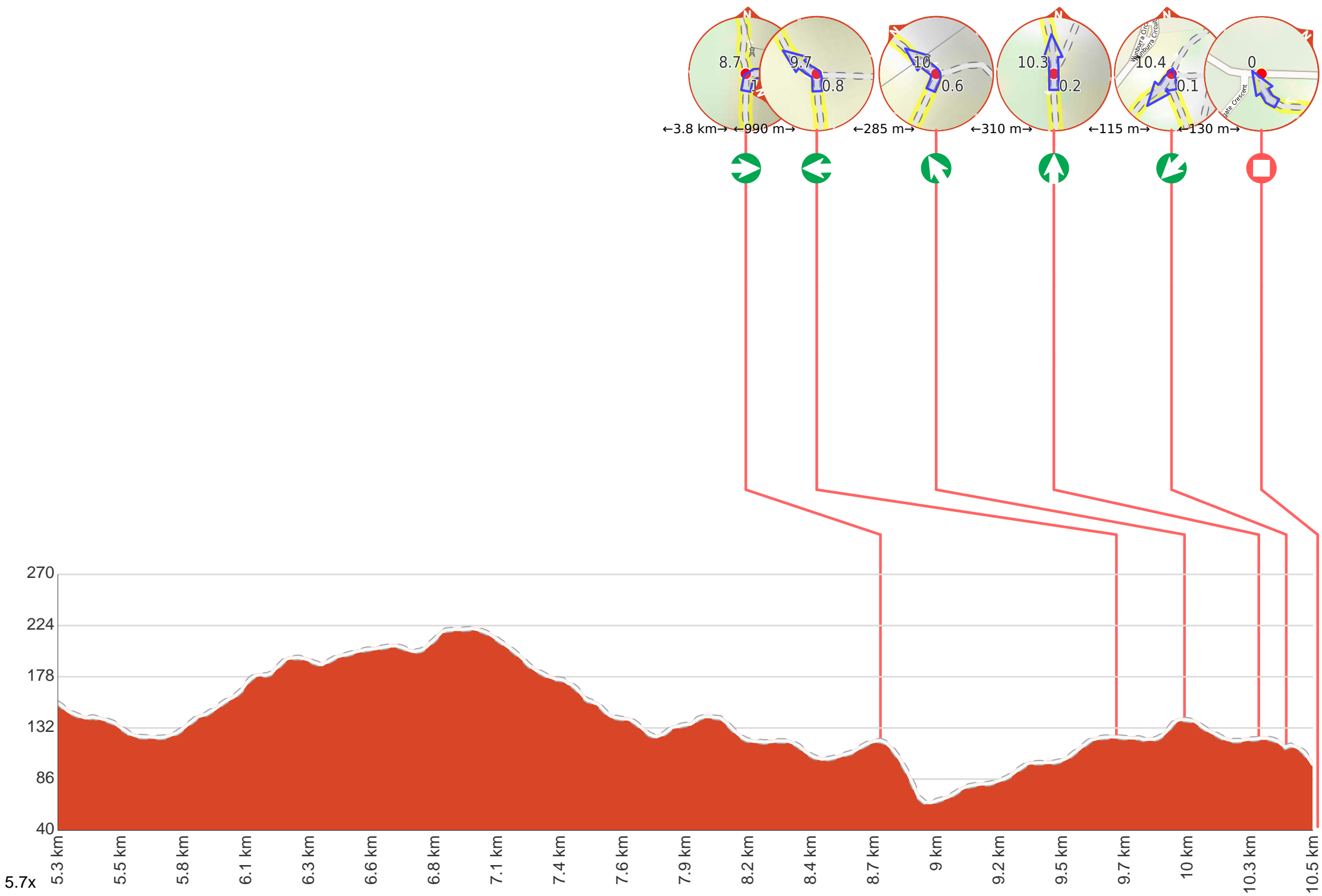
Share

[Bushwalk.com](https://bushwalk.com/j/K98R0G)
[/j/K98R0G](https://bushwalk.com/j/K98R0G)









Getting started: From Wunburra Circuit (20 metres northeast of intersection with Aldgate Crescent), head along the dirt/gravel track with railings gently uphill, moving directly away from the road. Follow the said track as it veers left, then take a right U (V to be exact) turn at the first intersection. Pass through a metal gate and veer right after passing by a power pole/tower to continue along Nerang NP Southeastern Circuit.

