



# Wallaby Walking Track

(Wiradjuri Country)

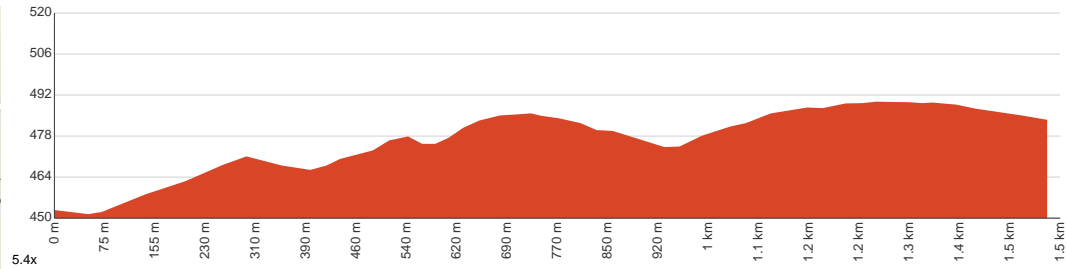
1 h to 1 h 30 min

3 km  
Return

↑ 84 m  
↓ 84 m

4  
Hard track

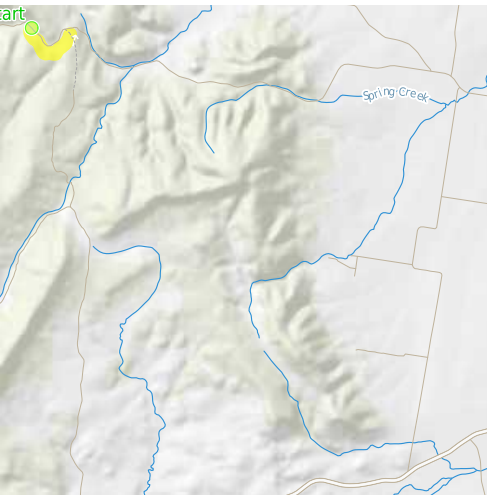
Starting from Wallaby picnic area this walk guides you through ironbark and scribbly gum forests to reach the Ironbark picnic area. You can make it as a one-way walk or retrace your steps. Look out for wallabies which the track is called after. Let us begin by acknowledging the Wiradjuri people, Traditional Custodians of the land on which we travel today, and pay our respects to their Elders past and present.



<b>Class 4 of 6</b> Rough track, where fallen trees and other obstacles are likely	
<b>Quality of track</b>	Rough track, where fallen trees and other obstacles are likely (4/6)
<b>Gradient</b>	Short steep hills (3/6)
<b>Signage</b>	Minimal directional signs (4/6)
<b>Infrastructure</b>	Limited facilities (such as cliffs not fenced, significant creeks not bridged) (4/6)
<b>Experience Required</b>	No experience required (2/6)
<b>Weather</b>	Forecasted & unexpected storms and severe weather may impact on navigation and safety (4/6)

**Getting to the start:** From Mid Western Highway, B64

- Turn on to Tallarook Road then drive for 9.4 km
- Turn left onto Barryrennie Road and drive for another 11 km



**Before you start any journey ensure you;**

- Tell someone you trust where you are going and what to do if you are late returning
- Have adequate equipment, supplies, skills & knowledge to undertake this journey safely
- Consider weather forecasts, park/track closures & fire dangers
- Can respond to emergencies & call for help at any point
- Are healthy and fit enough for this journey

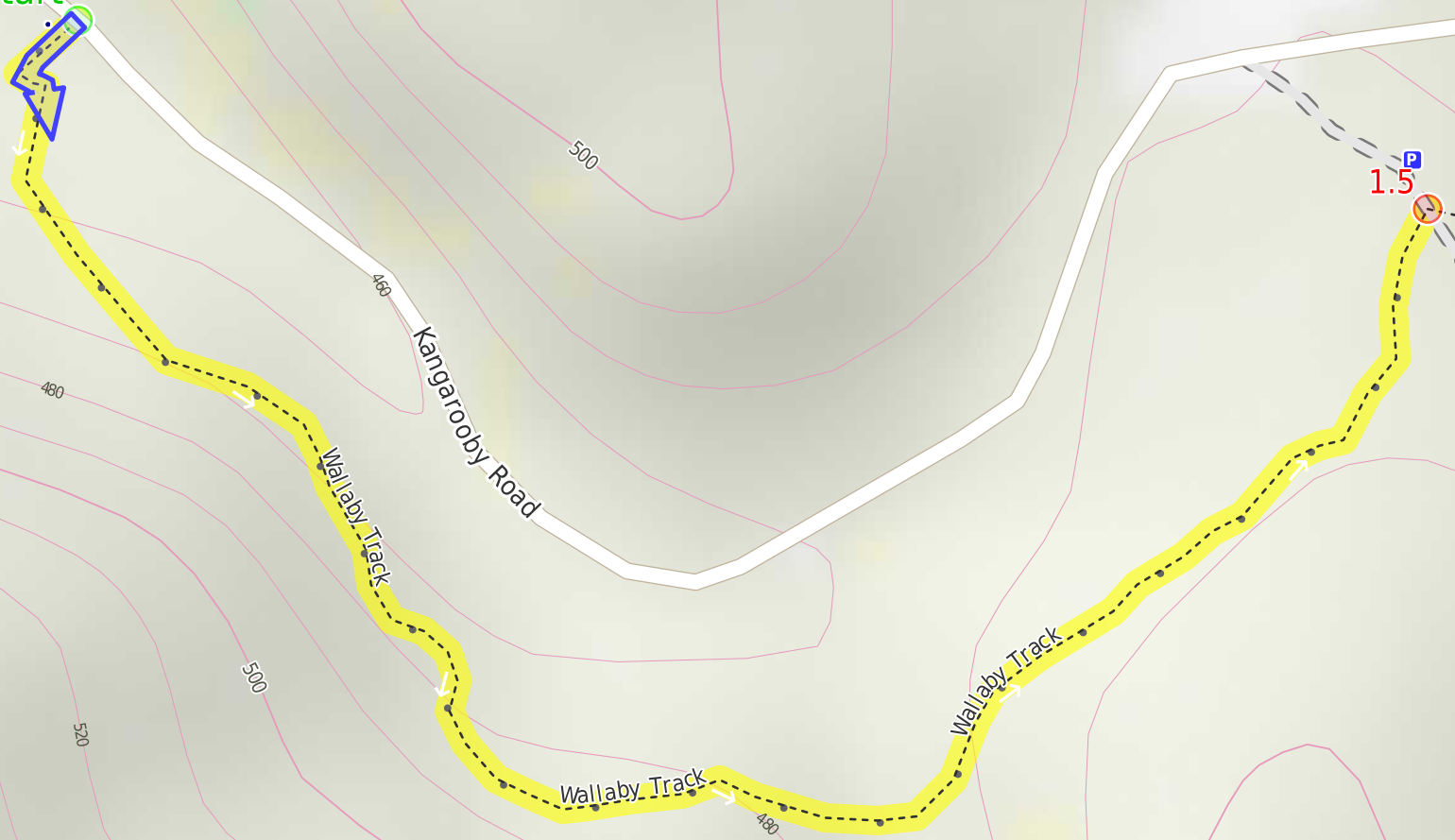
If not, change plans and stay safe. It is okay to delay and ask people for help.

Share  
Bushwalk.com  
[/j/PK1M7C](https://bushwalk.com/j/PK1M7C)





start



Kangaroo Road

Wallaby Track

Wallaby Track

Wallaby Track

Kangaroo Road

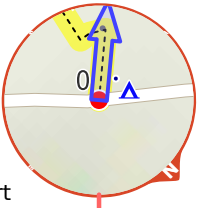
Ironbark Track

1.5 P



0.5

1 km



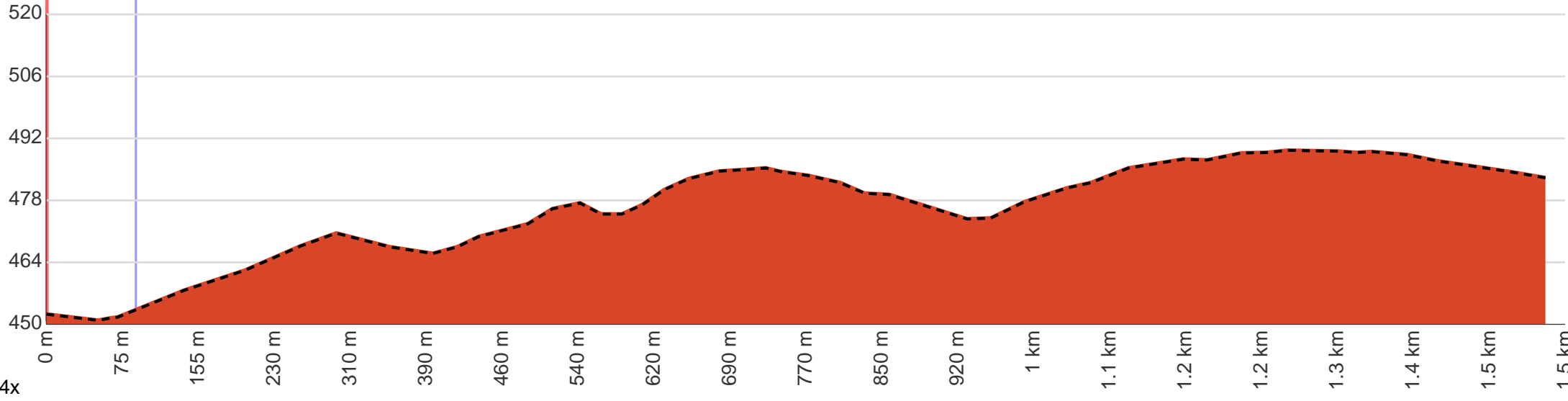
Start



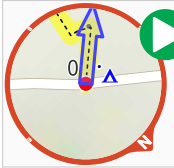
Camp site



←1.5 km→



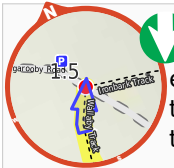
5.4x



**Start.**



After 90 m come to the "Wallaby Camp" (15 m on your right).



Continue another 1.4 km to find the end. Then turn around here and retrace the main route for 1.5 km to get back to the start.



About 45 m past the end is "Ironbark Car Park".