



Talinguru Nyakunytjaku Circuit

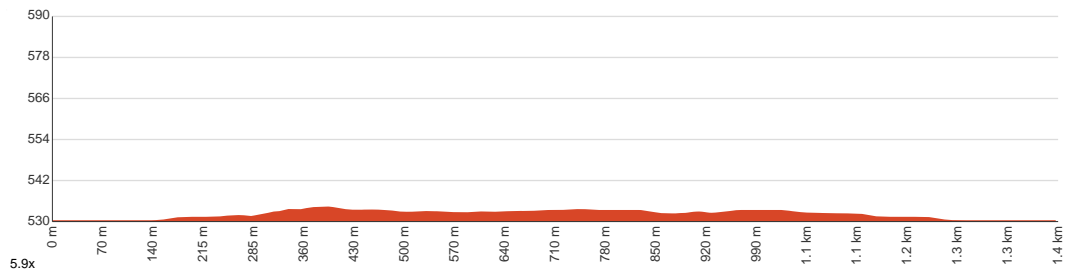
20 min to 40 min
 20 min to 45 min

1.4 km
Circuit

↑ 7 m
↓ 7 m

2
Easy track

Starting from the car park of Talinguru Nyakunytjaku, Petermann, this walk gives you a tour of the sand dune via the Minymanku and Watiku walks, visiting a couple of viewing platforms along the way. Learn about the culture and the daily tasks of the Aboriginal people such as crafting tools, using fire, food processing and children's games. Uluru and Kata Tjuta look iconically beautiful from this sand dune, especially at sunrise. That's why it's quite crowded during that time frame and surprisingly secluded at sunset. You'll get great shots regardless of the time as the viewing platforms provide you 360 degree views all around the dry land. Both the platforms and the circuit are wheelchair accessible. Wear a hat and apply sunscreen to have a more comfortable experience. Let us begin by acknowledging the Traditional Custodians of the land on which we travel today, and pay our respects to their Elders past and present.



Class 2 of 6 Clear and well formed track or trail	
Quality of track	Clear and well formed track or trail (2/6)
Gradient	Flat, no steps (1/6)
Signage	Clearly signposted (1/6)
Infrastructure	Generally useful facilities (such as fenced cliffs and seats) (1/6)
Experience Required	No experience required (1/6)
Weather	Weather generally has little impact on safety (1/6)

Getting to the start: From Stuart Highway, 87

- Turn on to Lasseter Highway, A4 then drive for 252.6 km
- Continue and drive for another 8 km
- At roundabout, take exit 3 and drive for another 3.8 km
- Turn right and drive for another 3 km
- At roundabout, take exit 1 and drive for another 210 m
- Keep right and drive for another 10 m
- Turn right and drive for another 80 m

Before you start any journey ensure you;

- Tell someone you trust where you are going and what to do if you are late returning
- Have adequate equipment, supplies, skills & knowledge to undertake this journey safely
- Consider weather forecasts, park/track closures & fire dangers
- Can respond to emergencies & call for help at any point
- Are healthy and fit enough for this journey

If not, change plans and stay safe. It is okay to delay and ask people for help.

Share
Bushwalk.com
[ij/UD7NOK](https://bushwalk.com/ij/UD7NOK)

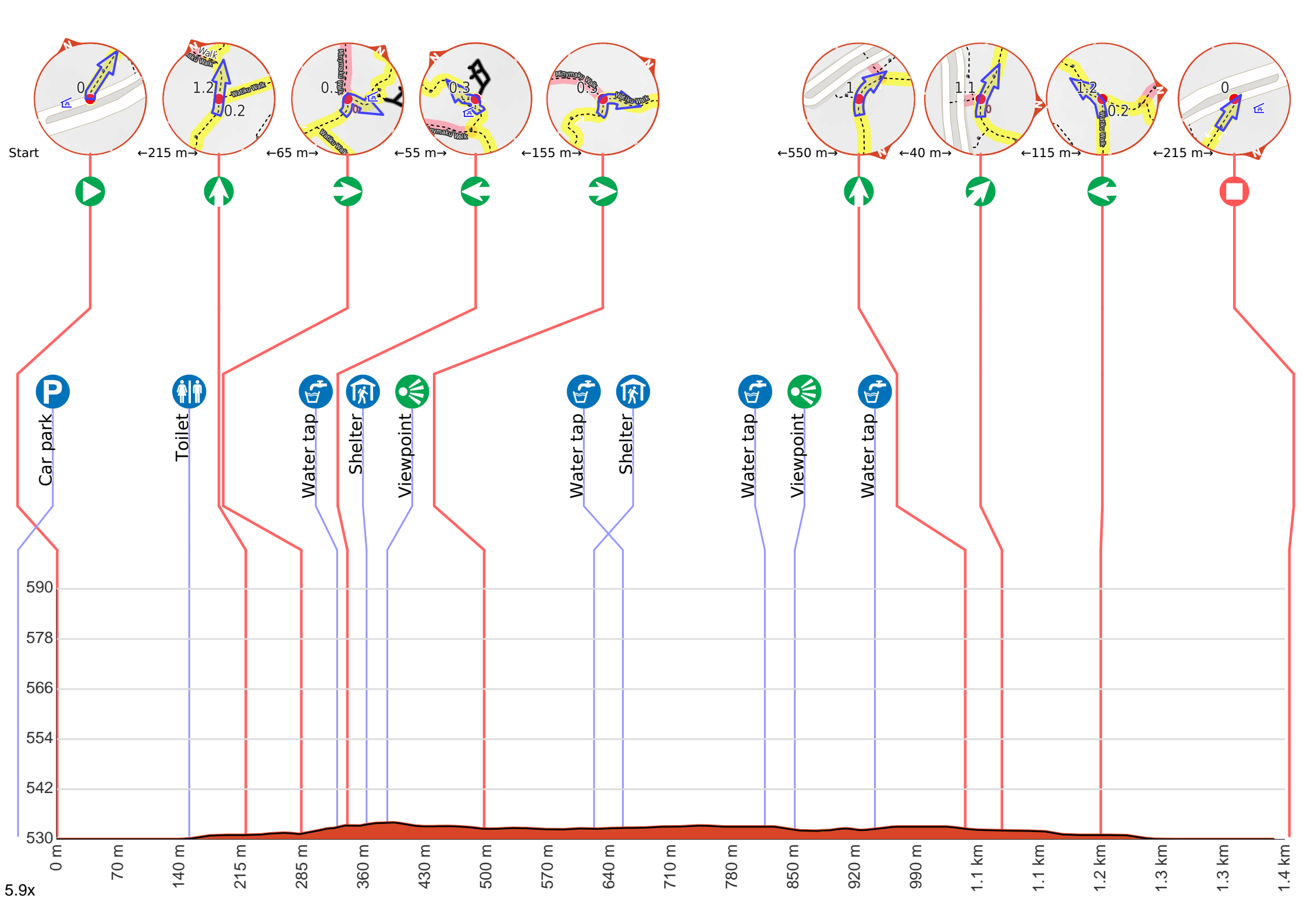




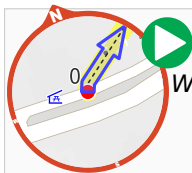
start

Talinguru
Nyakunytjaku





Getting started: From the middle of the western car park, head towards the sealed walking track which has the little white poles serving as a bollard/barrier. Pass between them and head along the said track as you move diagonally away from the car park. Pass by a signpost that says "Welcome to..." to your left. 210 metres in (from the start), keep left at the 3-way intersection. Turn right at the next intersection and head towards the viewing platform to continue along the Talinguru Nyakunytyaku Circuit(clockwise).

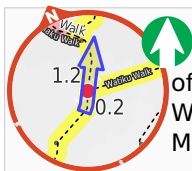


Start heading along *Minymaku and Watiku Walk*.

P Find the car park at the start.

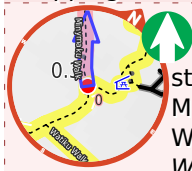
↑ After another 165 m **continue straight**, to head along Minymaku and Watiku Walk.

♿ After another 30 m pass the toilet (90 m on your right).



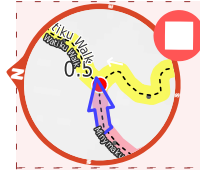
After another 65 m (at the intersection of Minymaku and Watiku Walk & Watiku Walk) **continue straight**, to head along Minymaku and Watiku Walk.

Start of an alternate route: An alternate route skipping the viewing platform in the middle.



To take the alternate route continue straight here. at the intersection of Minymaku and Watiku Walk & Minymaku Walk **Start** heading along *Minymaku Walk* (a footpath).

♿ After 115 m pass the water tap (10 m on your right).



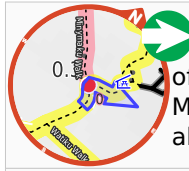
After another 85 m come to the end.



At the end of this alternate route, rejoin the main route.



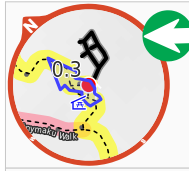
The alternate route finishes here. Veer left to rejoin the main route at the 490 m waypoint.



After another 65 m (at the intersection of Minymaku and Watiku Walk & Minymaku Walk) **turn right**, to head along Minymaku and Watiku Walk.



After another 40 m to find the water tap.



After another 10 m **turn left**.



After another 20 m pass the shelter (9 m on your left).



After another 25 m come to the "Talinguru Nyakunytyaku Sunrise Viewpoint" (20 m on your right).



The alternate route finishes here. Veer left to rejoin the main route at the 490 m waypoint.



After another 110 m (at the intersection of Watiku Walk & Minymaku and Watiku Walk) **turn right**, to head along Watiku Walk.



After another 160 m pass the water tap (6 m on your right).



Then pass the shelter (6 m on your right).



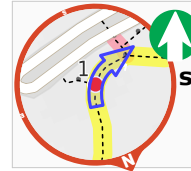
After another 195 m pass the water tap (10 m on your left).



After another 35 m come to the "Watiku platform" (5 m on your right).

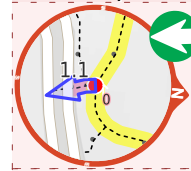


After another 90 m pass the water tap (on your left).



After another 105 m **continue straight**, to head along Watiku Walk.

Start of an alternate access route: An alternate access point from/to the eastern car park.



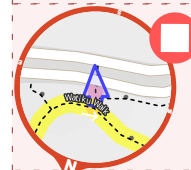
Start.



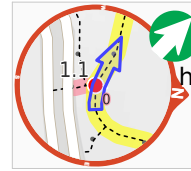
After another 10 m **continue straight**.



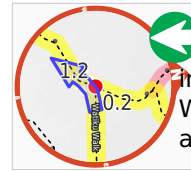
After another 10 m come to a car park.



The end.



After another 40 m **veer right**, to head along Watiku Walk.



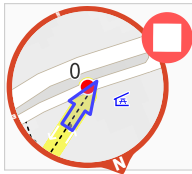
After another 115 m (at the intersection of Minymaku and Watiku Walk & Watiku Walk) **turn left**, to head along Minymaku and Watiku Walk.



After another 125 m **continue straight**, to head along Minymaku and Watiku Walk.



After another 90 m pass the car park (9 m on your left).



The end.