



# Lanita Break & Mango Tree North

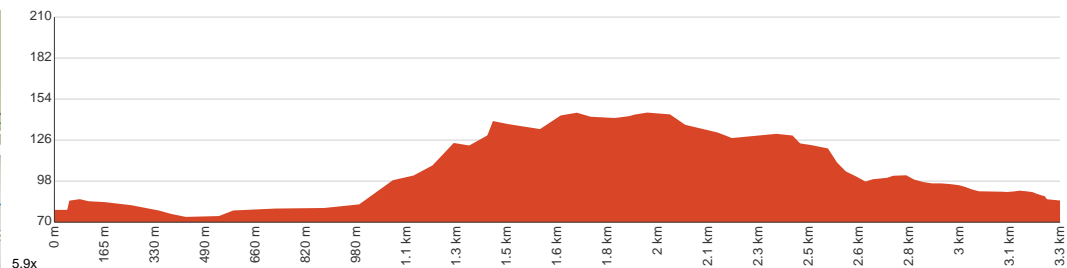
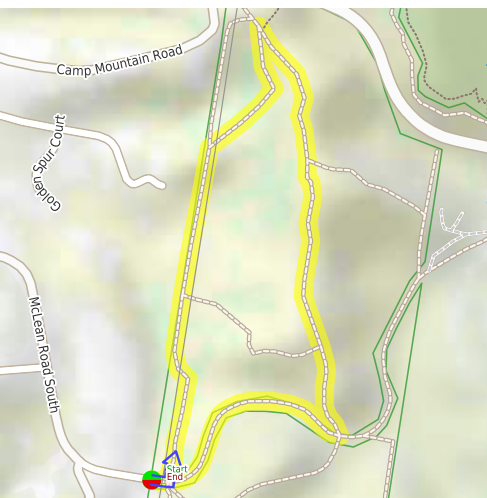
 1 h to 1 h 30 min

  
3.3 km  
Circuit

  
↑ 97 m  
↓ 97 m

  
Moderate track

Starting from the end of Lanita Court, Ferny Hills, this circuit walk gives you a tour of the southern part of Samford Conservation Park via Lanita Break & Mango Tree North tracks. This is a great walk for those looking for a bit of a challenge. With lots of ups and downs, there's plenty of variation in scenery to keep things interesting. The journey also offers beautiful mountain views. If you're looking for a spot to take your furry friend, this one is perfect for on-leash dog walking. However, remember that the paved pathway can get busy with MTBs early in the morning, so be sure to keep an eye out. Let us begin by acknowledging the Traditional Custodians of the land on which we travel today, and pay our respects to their Elders past and present.

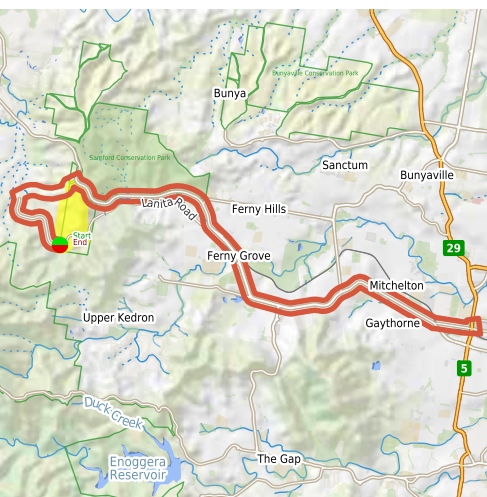


Class 3 of 6  
Formed track, with some branches and other obstacles

Quality of track	Clear and well formed track or trail (2/6)
Gradient	Short steep hills (3/6)
Signage	Directional signs along the way (3/6)
Infrastructure	Generally useful facilities (such as fenced cliffs and seats) (2/6)
Experience Required	No experience required (2/6)
Weather	Weather generally has little impact on safety (1/6)

**Getting to the start:** From Wardell Street, 5, Enoggera.

- Turn on to then drive for 130 m
- Keep right and drive for another 20 m
- Turn right onto Pickering Street and drive for another 880 m
- Turn right onto Samford Road, 22 and drive for another 10 km
- Turn left onto Camp Mountain Road and drive for another 1.4 km
- Turn left onto McLean Road South and drive for another 1.6 km
- Turn slight left onto Lanita Court and drive for another 205 m



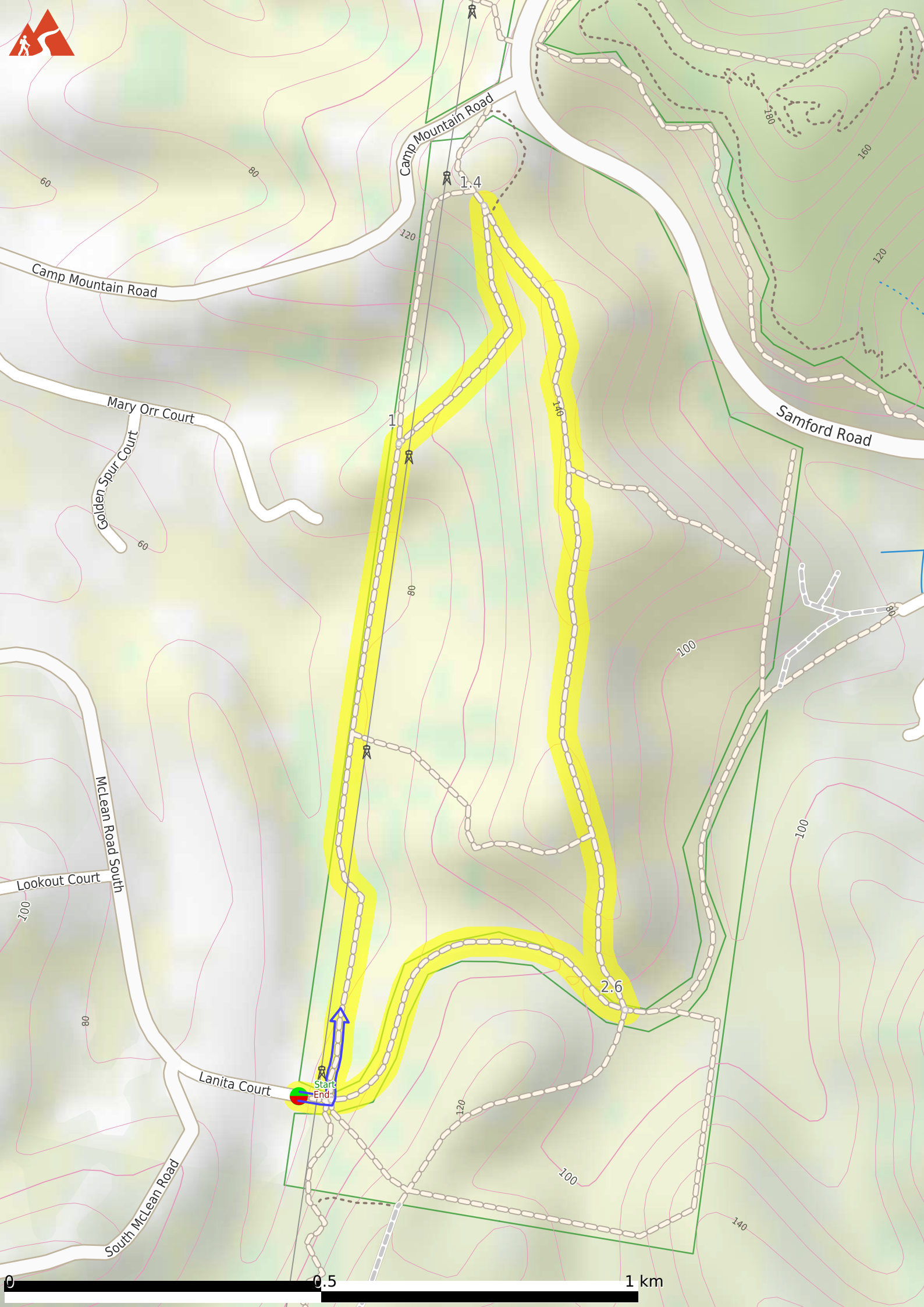
## Before you start any journey ensure you;

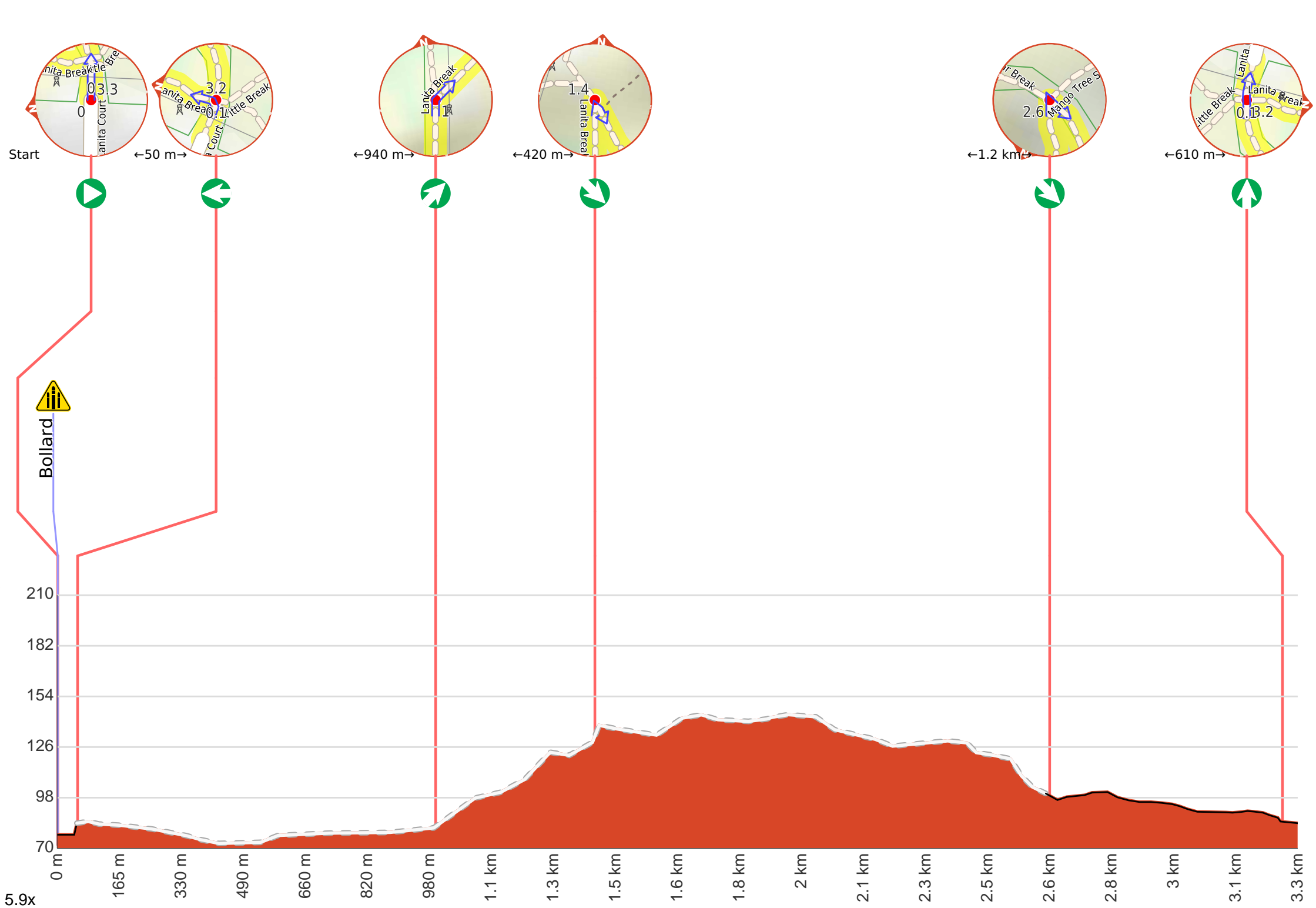
- Tell someone you trust where you are going and what to do if you are late returning
- Have adequate equipment, supplies, skills & knowledge to undertake this journey safely
- Consider weather forecasts, park/track closures & fire dangers
- Can respond to emergencies & call for help at any point
- Are healthy and fit enough for this journey

If not, change plans and stay safe. It is okay to delay and ask people for help.

Share  
[Bushwalk.com](https://bushwalk.com/j/UWGGEV)  
[/j/UWGGEV](https://bushwalk.com/j/UWGGEV)







**Getting started:** From the end of Lanita Court, head towards the grey metal gate with multiple signs on it. Pass through the bollard next to the gate, then make a perpendicular left turn shortly after. Head along the dirt track (Lanita Break) to continue along Lanita Break & Mango Tree North Track (clockwise).



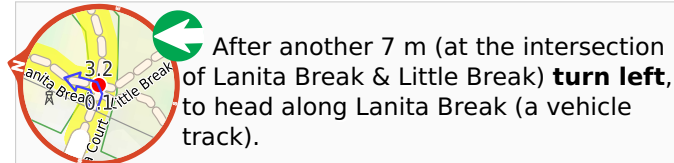
At the intersection of Lanita Rail Trail & Lanita Court **Start** heading along *Lanita Rail Trail* (a highway|cycleway).



Then head through the bollard.



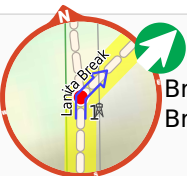
After another 45 m (from the Lanita Rail Trail) **continue straight**, to head along Lanita Rail Trail.



After another 7 m (at the intersection of Lanita Break & Little Break) **turn left**, to head along Lanita Break (a vehicle track).



After another 530 m (at the intersection of Lanita Break & Pipe Road) **continue straight**, to head along Lanita Break.



After another 410 m (from the Lanita Break) **veer right**, to head along Lanita Break.



After another 420 m (at the intersection of Mango Tree North & Lanita Break) **turn sharp right**, to head along Mango Tree North.



After another 20 m (at the intersection of Mango Tree North & Kindy) **continue straight**, to head along Mango Tree North.



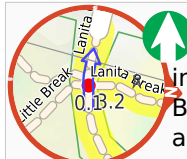
After another 400 m (at the intersection of Mango Tree North & Dead Cat Road) **continue straight**, to head along Mango Tree North.



After another 530 m (at the intersection of Mango Tree North & Pipe Road) **continue straight**, to head along Mango Tree North.



After another 260 m (at the intersection of Lanita Rail Trail & Mango Tree South) **turn sharp right**, to head along Lanita Rail Trail (a highway|cycleway).



After another 610 m (at the intersection of Lanita Rail Trail & Little Break) **continue straight**, to head along Lanita Rail Trail.



After another 7 m (from the Lanita Rail Trail) **continue straight**, to head along Lanita Rail Trail.



Continue another 45 m to find at the intersection of Lanita Rail Trail & Lanita Court at the end.