



Meander Falls

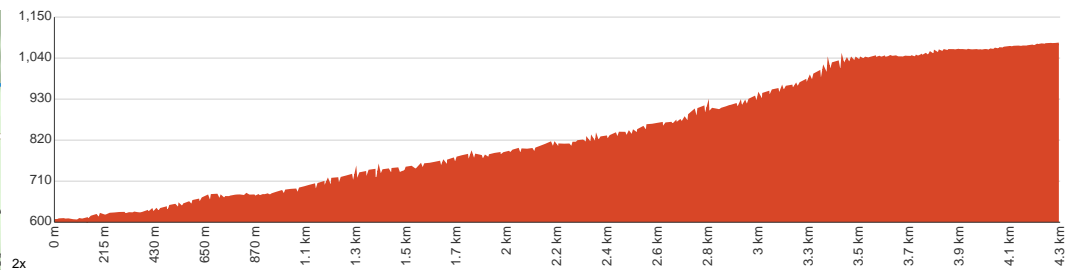
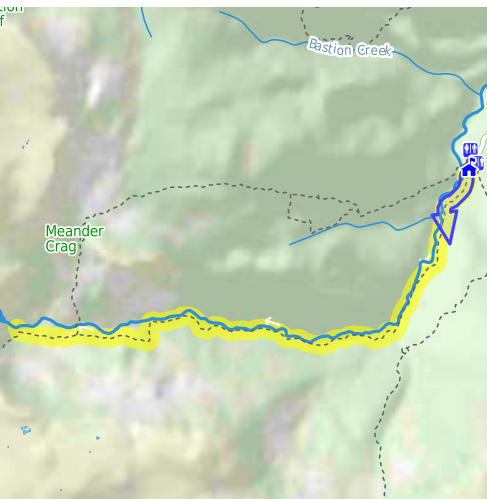
 4 h to 6 h


8.7 km
Return


↑ 577 m
↓ 577 m


Hard track

Starting from the car park at the end of Meander Falls Road, Meander Forest Reserve, this walk takes you to Meander Falls. Venture deep into the Great Western Tiers to find Meander Falls, an impressive two-tiered waterfall in the alpine area of the Meander River that drops 130 metres through a rocky chasm. The walk is a gradual incline, passing through varied vegetation as it closely follows the river, which can occasionally be glimpsed through the trees. At the end, you'll be rewarded with a spectacular view of the falls. The trail isn't always obvious, but there are red and yellow triangles marking the correct route. Some sections are steep and rocky, and during winter months, ice, snow and mud can make the walk difficult. After snow or frost, sections of the falls can freeze and form large icicles. Be prepared for sudden changes in weather conditions at higher elevations. Let us begin by acknowledging the Traditional Custodians of the land on which we travel today, and pay our respects to their Elders past and present.



Class 4 of 6 Rough track, where fallen trees and other obstacles are likely	
Quality of track	Rough track, where fallen trees and other obstacles are likely (4/6)
Gradient	Very steep (4/6)
Signage	Directional signs along the way (3/6)
Infrastructure	Limited facilities, not all cliffs are fenced (3/6)
Experience Required	Moderate level of bushwalking experience recommended (4/6)
Weather	Foretasted & unexpected storms and severe weather may impact on navigation and safety (4/6)

Getting to the start: From Bass Highway, 1, Deloraine.

- Turn on to then drive for 630 m
- Turn slight left onto Bowerbank Link, A5 and drive for another 700 m
- At roundabout, take exit 2 onto Meander Valley Road, A5 and drive for another 2.2 km
- Turn left onto East Parade, A5 and drive for another 7 km
- Continue onto Meander Road, C167 and drive for another 18.2 km
- Turn left onto Meander Falls Road and drive for another 1.4 km
- Turn right onto Meander Falls Road and drive for another 1.8 km

Before you start any journey ensure you;

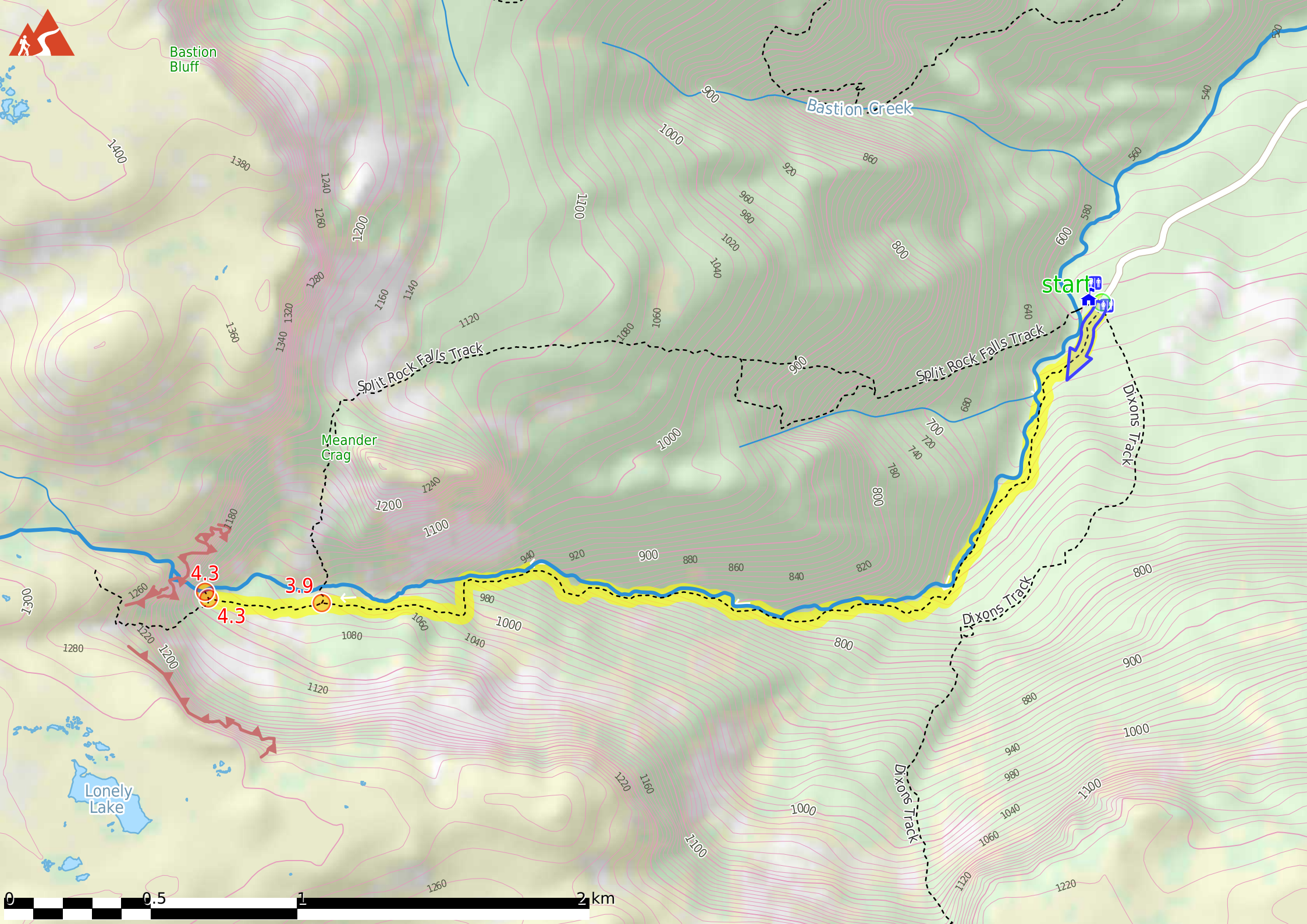
- Tell someone you trust where you are going and what to do if you are late returning
- Have adequate equipment, supplies, skills & knowledge to undertake this journey safely
- Consider weather forecasts, park/track closures & fire dangers
- Can respond to emergencies & call for help at any point
- Are healthy and fit enough for this journey

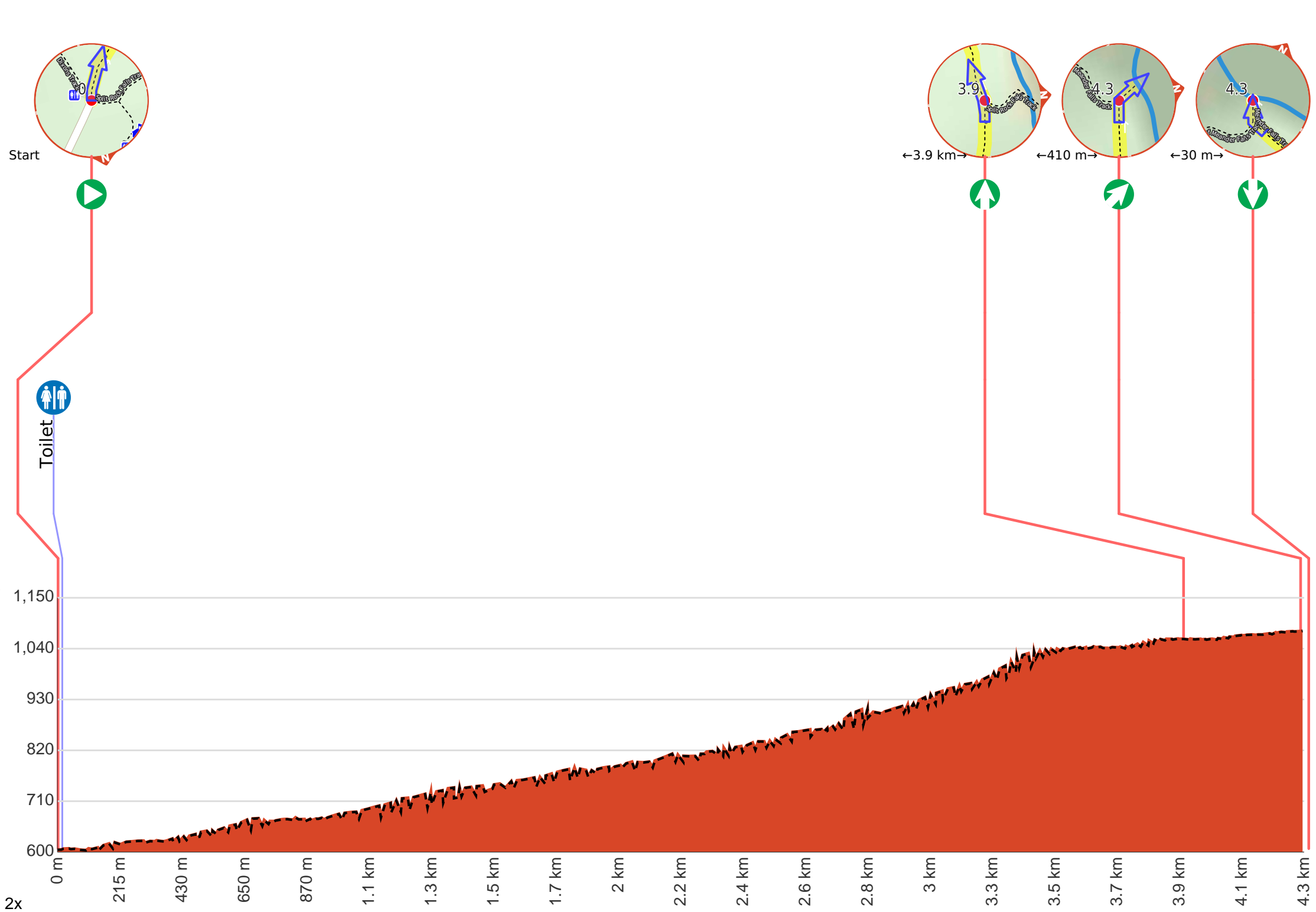
If not, change plans and stay safe. It is okay to delay and ask people for help.

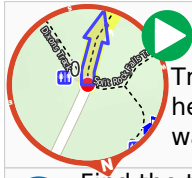
Share

[Bushwalk.com](https://bushwalk.com.au/FZOJQJ)
[/i/FZOJQJ](https://bushwalk.com.au/FZOJQJ)





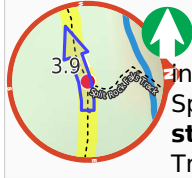




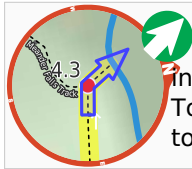
At the intersection of Meander Falls Track & Split Rock Falls Track **Start** heading along *Meander Falls Track* (a walking track).



Find the toilet at the start.
This toilet is wheelchair accessible.



After another 3.9 km (at the intersection of Meander Falls Track & Split Rock Falls Track) **continue straight**, to head along Meander Falls Track.



After another 410 m (at the intersection of Meander Falls Track & Top of Meander Falls Track) **veer right**, to head along Meander Falls Track.



(Meander Falls) Continue another 30 m to find the end. Then turn around here and retrace the main route for 4.3 km to get back to the start.