



Karawatha Melaleuca Circuit

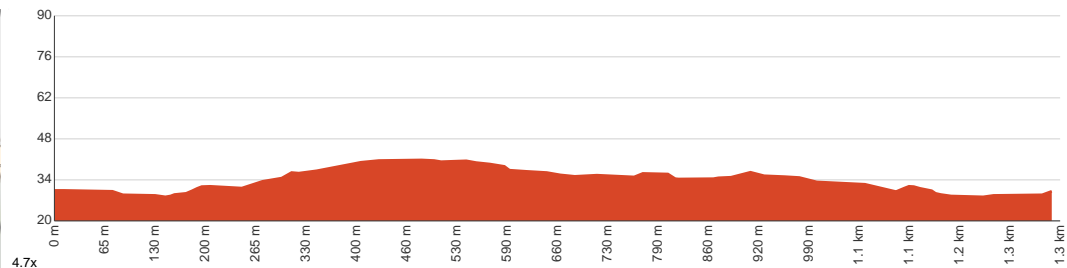
 20 min to 30 min


1.3 km
Circuit


↑ 22 m
↓ 22 m


Easy track

Starting from Stretton Recreation Reserve car park, Karawatha, this circuit track takes you on a small tour in the Karawatha Forest via a singular track, crossing a creek twice along the way. Karawatha Melaleuca Circuit is a cute little journey that visits a creek where you can spot turtles and Australasian swamphens. Picnic tables and drinking fountains (for dogs as well) are present, but there are no toilets. The track involves 10 to 15 steps. This track is temporarily closed as of April 19, 2023. For more information: <https://www.brisbane.qld.gov.au/clean-and-green/natural-environment-and-water/bushland-reserves/karawatha-forest-park> Let us begin by acknowledging the Traditional Custodians of the land on which we travel today, and pay our respects to their Elders past and present.



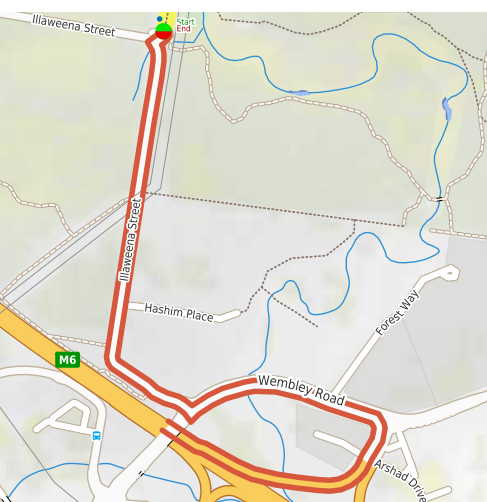
Class 2 of 6

Clear and well formed track or trail

Quality of track	Clear and well formed track or trail (2/6)
Gradient	Gentle hills with occasional steps (2/6)
Signage	Clearly signposted (1/6)
Infrastructure	Generally useful facilities (such as fenced cliffs and seats) (2/6)
Experience Required	No experience required (2/6)
Weather	Weather generally has little impact on safety (2/6)

Getting to the start: From Logan Motorway, M6, Drewvale.

- Turn on to then drive for 610 m
- Keep left and drive for another 630 m
- Turn right onto Illaweena Street and drive for another 1.2 km
- Turn right and drive for another 50 m



Before you start any journey ensure you;

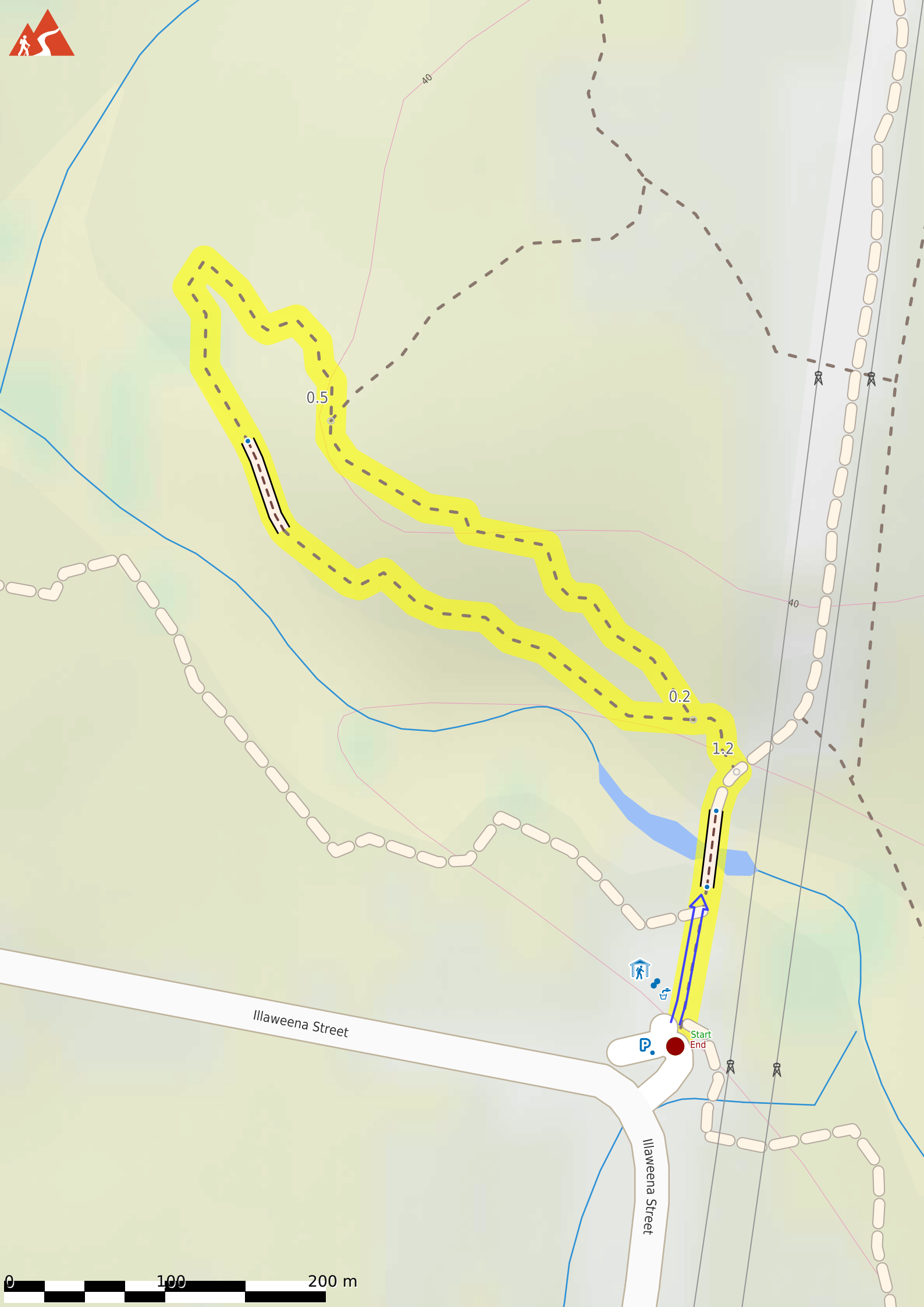
- Tell someone you trust where you are going and what to do if you are late returning
- Have adequate equipment, supplies, skills & knowledge to undertake this journey safely
- Consider weather forecasts, park/track closures & fire dangers
- Can respond to emergencies & call for help at any point
- Are healthy and fit enough for this journey

If not, change plans and stay safe. It is okay to delay and ask people for help.

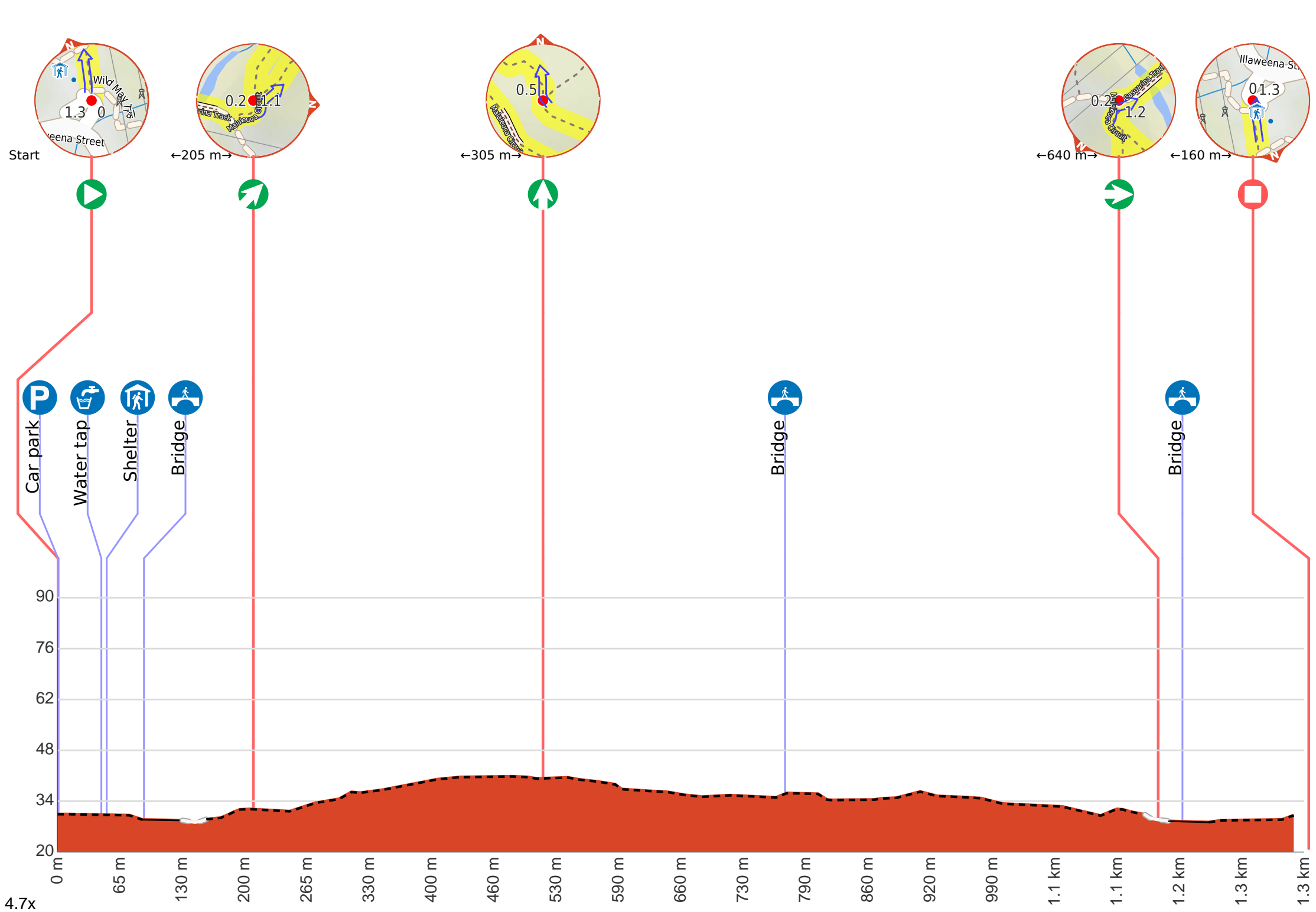
Share

Bushwalk.com
[/i/NFDOWW](https://i/NFDOWW)





0 100 200 m





Start.



Find the Stretton Recreation Reserve at the start.



After another 15 m (from the Wild May Trail) **continue straight.**



After another 35 m pass the water tap (20 m on your left).



After another 6 m pass the shelter (20 m on your left).



After another 25 m **continue straight.**



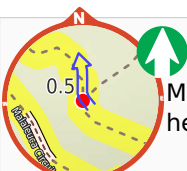
After another 15 m cross the bridge (about 40 m long)



After another 25 m (at the intersection of Malaleuca Circuit & Casuarina Track) **turn left**, to head along Malaleuca Circuit (a walking track).



After another 45 m (from the Malaleuca Circuit) **veer right**, to head along Malaleuca Circuit.



After another 305 m (from the Malaleuca Circuit) **continue straight**, to head along Malaleuca Circuit.



After another 255 m cross the bridge (about 55 m long)



After another 290 m (from the Malaleuca Circuit) **continue straight**, to head along Malaleuca Circuit.



After another 45 m (at the intersection of Casuarina Track & Malaleuca Circuit) **turn right**, to head along Casuarina Track (a vehicle track).



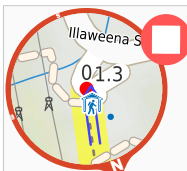
After another 25 m cross the bridge (about 40 m long)



After another 15 m **continue straight.**



After another 65 m (from the Wild May Trail) **continue straight.**



After another 15 m come to the end.