



Panorama Walk

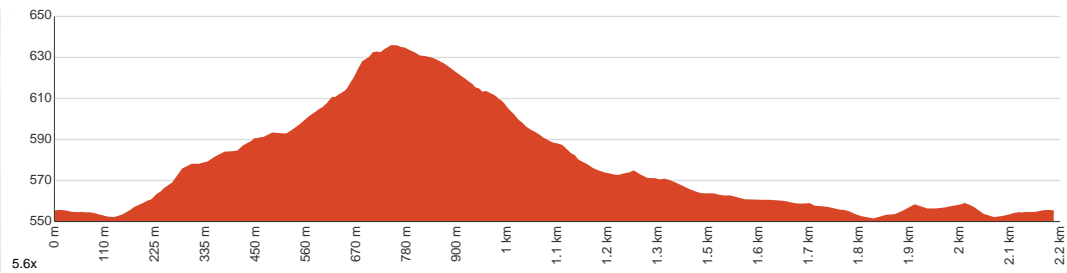
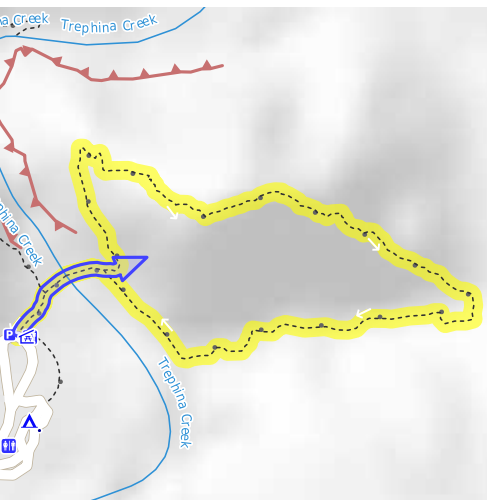
 1 h to 3 h


2.2 km
Circuit


↑ 102 m
↓ 102 m

 4
Hard track

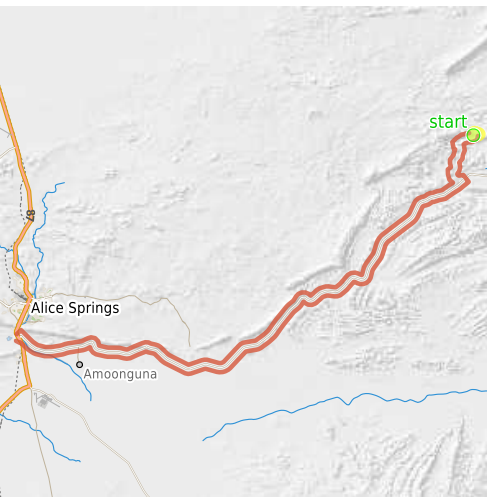
Starting from the campground at the end of Trepkina Gorge Road, Hart, this walk takes you on a circuit in the nature park, visiting a hill summit and crossing Trepkina Creek along the way. Hence the name, this walk offers you panoramic views over Mordor Pound and the Trepkina Bluff in the distance. As you make your way through the well-signposted rocky track, keep an eye out for Red Gums and Ghost Gums along with colourful wildflowers. You may come across some dingoes as well. There's a bit of steepness to the track, yet the stunning views and the red walls of the gorge shining under the sun make it worth the hassle. The campground at the start is well-equipped and maintained, see it for yourself and spend a night if you feel like it. Remember to bring plenty of water. Let us begin by acknowledging the Traditional Custodians of the land on which we travel today, and pay our respects to their Elders past and present.



Class 4 of 6 Rough track, where fallen trees and other obstacles are likely	
Quality of track	Formed track, with some branches and other obstacles (3/6)
Gradient	Very steep (4/6)
Signage	Clearly signposted (2/6)
Infrastructure	Limited facilities, not all cliffs are fenced (3/6)
Experience Required	No experience required (2/6)
Weather	Weather generally has little impact on safety (2/6)

Getting to the start: From Stuart Highway, 87

- Turn on to Ross Highway, 8 then drive for 335 m
- At roundabout, take exit 3 onto Ross Highway, 8 and drive for another 135 m
- Turn slight left onto Ross Highway, 8 and drive for another 65.4 km
- Turn left onto Trepkina Gorge Road and drive for another 8.3 km

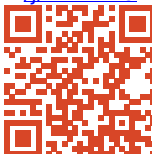


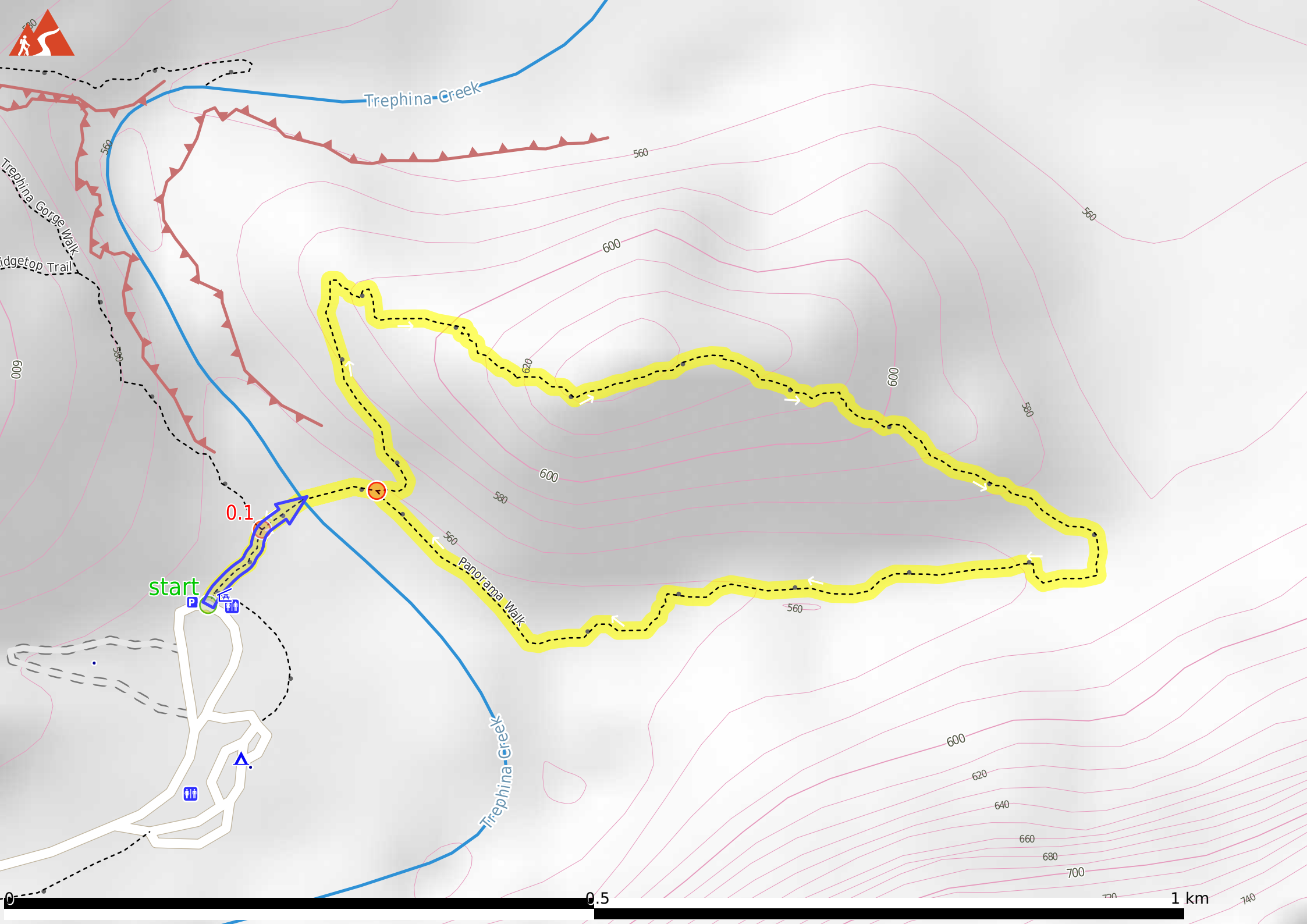
Before you start any journey ensure you;

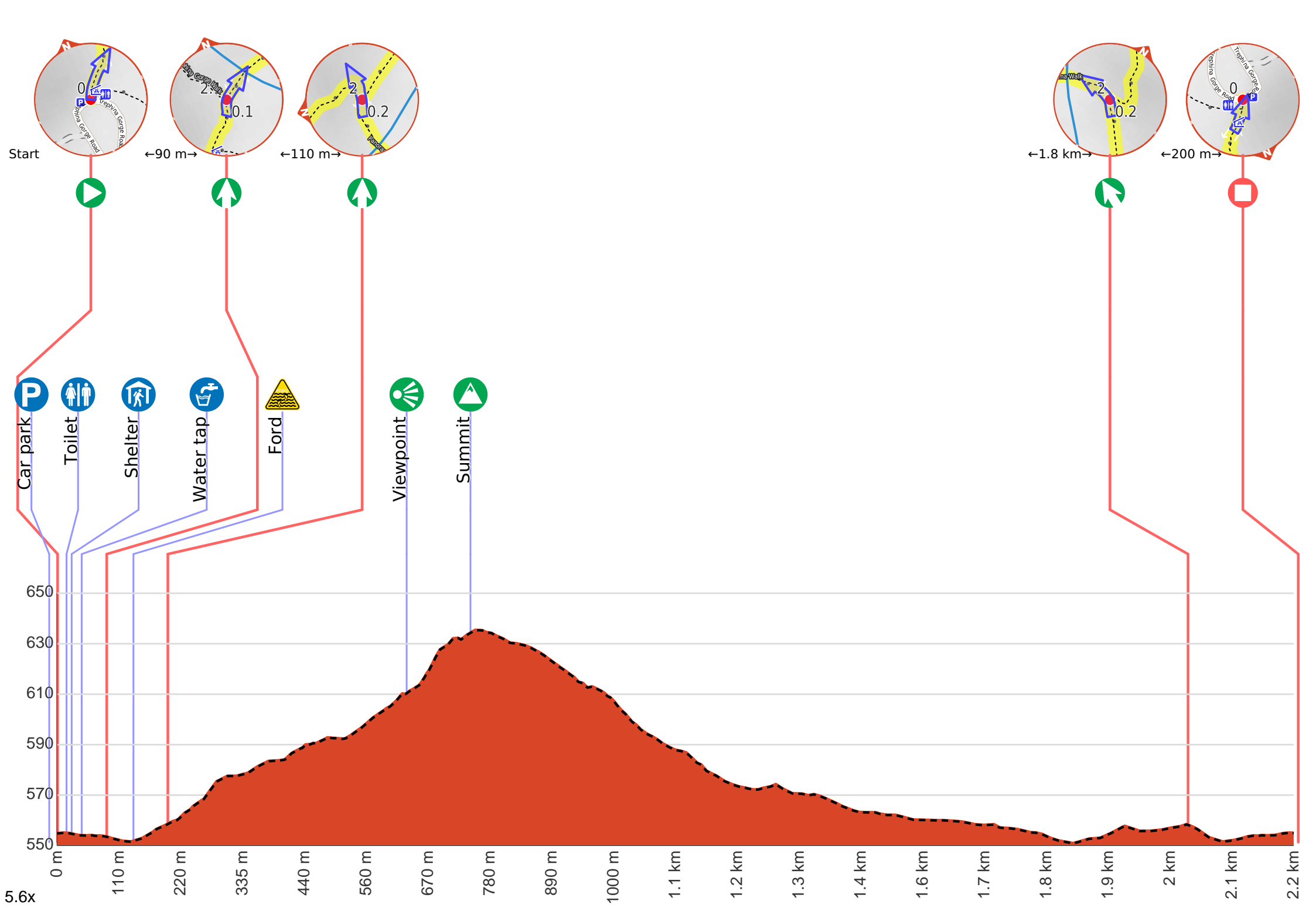
- Tell someone you trust where you are going and what to do if you are late returning
- Have adequate equipment, supplies, skills & knowledge to undertake this journey safely
- Consider weather forecasts, park/track closures & fire dangers
- Can respond to emergencies & call for help at any point
- Are healthy and fit enough for this journey

If not, change plans and stay safe. It is okay to delay and ask people for help.

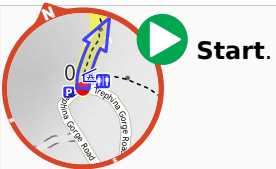
Share
Bushwalk.com
[ij/Y4DZW9](https://bushwalk.com/ij/Y4DZW9)







Getting started: From the northern end of the campground, head northeast towards the creek bed along the dirt track. Keep right at the first intersection and cross the creek bed. Shortly after, keep left at the 3-way intersection to continue along the Panorama Walk (clockwise). Keep an eye out for the red arrows that mark the track.

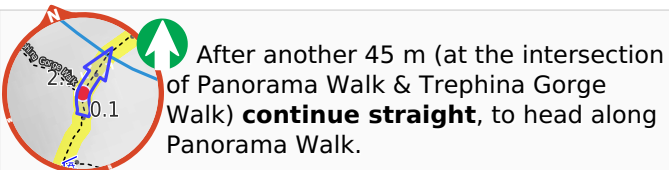


P There is a car park (about 15 m back from the start).

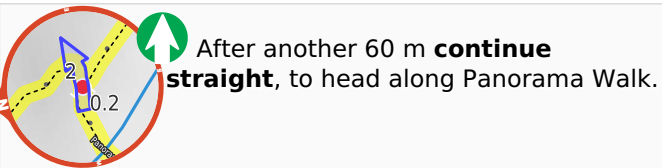
Find the toilet at the start.

After another 9 m pass the shelter (on your right).

After another 20 m pass the water tap (on your right).

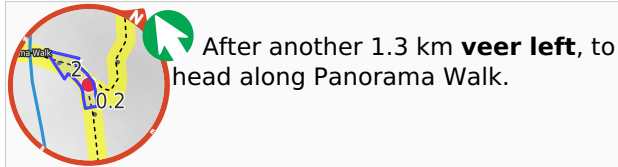


After another 50 m cross the ford.



After another 430 m come to the viewpoint.

After another 115 m pass the summit (on your right).



After another 110 m (at the intersection of Trepina Gorge Walk & Panorama Walk) **continue straight**.

